

Recombinant Phospho-CrkL (Tyr207) Monoclonal Antibody

catalog number: **AN300157L**

Note: Centrifuge before opening to ensure complete recovery of vial contents.

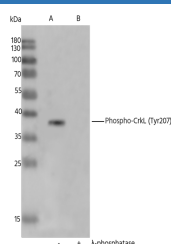
Description

Reactivity	Human
Immunogen	A synthetic peptide corresponding to the residues around (Tyr207) of Human Phospho-CrkL
Host	Rabbit
Isotype	IgG
Clone	5B9
Purification	Protein A
Buffer	10 mM sodium HEPES, 150 mM NaCl, 100 µg/mL protein protectant, 50% glycerol, pH 7.5

Applications Recommended Dilution

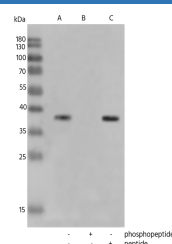
WB	1:1000-1:5000
-----------	---------------

Data



Western blot analysis of extracts from K562, untreated (line A); treated with λ-phosphatase (line B) using Phospho-CrkL (Tyr207) Monoclonal Antibody at 1:2000 dilution.

Observed-MW:38 kDa
Calculated-MW:35 kDa



Western blot analysis of extracts from K562, with antigen-specific phosphopeptide (line B) or antigen-specific peptide (line C) using Phospho-Phospho-CrkL (Tyr207) Monoclonal Antibody at 1:2000 dilution.

Observed-MW:38 kDa
Calculated-MW:35 kDa

Preparation & Storage

Storage	This antibody can be stored at 2°C-8°C for one month without detectable loss of activity. Antibody products are stable for twelve months from date of receipt when stored at -20°C to -80°C. Preservative-Free. Avoid repeated freeze-thaw cycles.
Shipping	Ice bag

Background

This gene encodes a protein kinase containing SH2 and SH0 (src homology) domains which has been shown to activate the RAS and JUN kinase signaling pathways and transform fibroblasts in a RAS-dependent fashion. It is a substrate of the BCR-ABL tyrosine kinase, plays a role in fibroblast transformation by BCR-ABL, and may be oncogenic.

For Research Use Only