

AP1S1 Polyclonal Antibody

Catalog Number: E-AB-52688



Note: Centrifuge before opening to ensure complete recovery of vial contents.

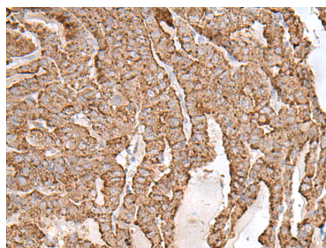
Description

Reactivity	Human, Mouse
Immunogen	Fusion protein of human AP1S1
Host	Rabbit
Isotype	IgG
Purification	Antigen affinity purification
Conjugation	Unconjugated
Formulation	PBS with 0.05% NaN ₃ and 40% Glycerol, pH7.4

Applications Recommended Dilution

IHC	1:50-1:300
ELISA	1:5000-1:10000

Data



Immunohistochemistry of paraffin-embedded Human thyroid cancer tissue using AP1S1 Polyclonal Antibody at dilution of 1:65(×200)

Preparation & Storage

Storage Store at -20°C. Avoid freeze / thaw cycles.

Background

The protein encoded by this gene is part of the clathrin coat assembly complex which links clathrin to receptors in coated vesicles. These vesicles are involved in endocytosis and Golgi processing. This protein, as well as beta-prime-adaptin, gamma-adaptin, and the medium (μ) chain AP47, form the AP-1 assembly protein complex located at the Golgi vesicle.

For Research Use Only

A Reliable Research Partner in Life Science and Medicine

Toll-free: 1-888-852-8623

Web: www.elabscience.com

Tel: 1-832-243-6086

Email: techsupport@elabscience.com

Fax: 1-832-243-6017