

# RPP30 Polyclonal Antibody

Catalog Number: E-AB-62351



**Note:** Centrifuge before opening to ensure complete recovery of vial contents.

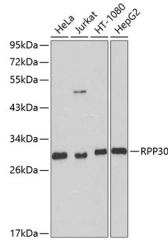
## Description

<b>Reactivity</b>	Human, Mouse, Rat
<b>Immunogen</b>	Recombinant fusion protein of human RPP30 (NP_006404.1).
<b>Host</b>	Rabbit
<b>Isotype</b>	IgG
<b>Purification</b>	Affinity purification
<b>Conjugation</b>	Unconjugated
<b>Formulation</b>	PBS with 0.02% sodium azide, 50% glycerol, pH7.3.

## Applications Recommended Dilution

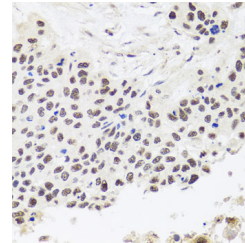
<b>WB</b>	1:500-1:2000
<b>IHC</b>	1:100-1:200

## Data



Western blot analysis of extracts of various cell lines using RPP30 Polyclonal Antibody at dilution of 1:1000.

**Observed Mw: 29kDa**  
**Calculated Mw: 29kDa/35kDa**



Immunohistochemistry of paraffin-embedded Human lung cancer using RPP30 Polyclonal Antibody at dilution of 1:100 (40x lens).

## Preparation & Storage

**Storage** Store at -20°C. Avoid freeze / thaw cycles.

## Background

RPP30 (Ribonuclease P/MRP Subunit P30) is a Protein Coding gene. Diseases associated with RPP30 include Hydrolethalus Syndrome 1 and Entropion. Among its related pathways are rRNA processing in the nucleus and cytosol and tRNA processing. Gene Ontology (GO) annotations related to this gene include ribonuclease P activity.

## For Research Use Only

A Reliable Research Partner in Life Science and Medicine

Toll-free: 1-888-852-8623

Web: [www.elabscience.com](http://www.elabscience.com)

Tel: 1-832-243-6086

Email: [techsupport@elabscience.com](mailto:techsupport@elabscience.com)

Fax: 1-832-243-6017