

SETD7/SET7/9 Monoclonal Antibody

catalog number: AN200053P

Note: Centrifuge before opening to ensure complete recovery of vial contents.

Description

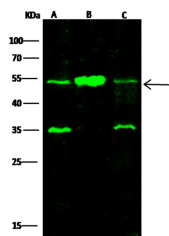
Reactivity	Human
Immunogen	Recombinant Human SETD7 / SET7 / 9 protein
Host	Mouse
Isotype	IgG1
Clone	12F11
Purification	Protein A
Buffer	0.2 µm filtered solution in PBS

Applications

Recommended Dilution

WB	1:500-1:1000
-----------	--------------

Data



Western Blot with SETD7 / SET7 / 9 Monoclonal Antibody at dilution of 1:500. Lane A: Hela Whole Cell Lysate, Lane B: MCF7 Whole Cell Lysate, Lane C: NIH3T3 Whole Cell Lysate, Lysates/proteins at 30 µg per lane.

Observed-MW:53 kDa

Calculated-MW:41 kDa

Preparation & Storage

Storage	This antibody can be stored at 2°C-8°C for one month without detectable loss of activity. Antibody products are stable for twelve months from date of receipt when stored at -20°C to -80°C. Preservative-Free. Avoid repeated freeze-thaw cycles.
Shipping	Ice bag

Background

Histone methyltransferase that specifically monomethylates 'Lys-4' of histone H3. H3 'Lys-4' methylation represents a specific tag for epigenetic transcriptional activation. Plays a central role in the transcriptional activation of genes such as collagenase or insulin. Recruited by IPF1/PDX-1 to the insulin promoter, leading to activate transcription. Has also methyltransferase activity toward non-histone proteins such as p53/TP53, TAF10, and possibly TAF7 by recognizing and binding the [KR]-[STA]-K in substrate proteins. Monomethylates 'Lys-189' of TAF10, leading to increase the affinity of TAF10 for RNA polymerase II. Monomethylates 'Lys-372' of p53/TP53, stabilizing p53/TP53 and increasing p53/TP50-mediated transcriptional activation.

For Research Use Only