

## APC Anti-Mouse FcεRIα Antibody[MAR-1]

**Catalog Number:** E-AB-F1188UE

**Note:** Centrifuge before opening to ensure complete recovery of vial contents.

### Description

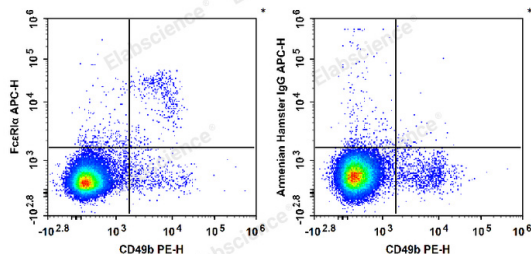
<b>Reactivity</b>	Mouse
<b>Host</b>	Armenian Hamster
<b>Isotype</b>	Armenian Hamster IgG
<b>Clone No.</b>	MAR-1
<b>Isotype Control</b>	APC Armenian Hamster IgG Isotype Control[PIP] [Product E-AB-F09853E]
<b>Conjugation</b>	APC
<b>Conjugation Information</b>	APC is designed to be excited by the Red (627-640 nm) laser and detected using an optical filter centered near 660 nm (e.g., a 660/20 nm bandpass filter).
<b>Storage Buffer</b>	Phosphate buffered solution, pH 7.2, containing 0.09% stabilizer.

### Applications

### Recommended usage

<b>FCM</b>	Each lot of this antibody is quality control tested by flow cytometric analysis. Please check your vial before the experiment. Since applications vary, the appropriate dilutions must be determined for individual use. We suggest each investigator should titrate the reagent to obtain optimal results [The recommended concentration is 0.1-1 μg/10 <sup>6</sup> cells in 100 μL volume].
------------	--

### Data



C57BL/6 murine bone marrow cells are stained with PE Anti-Mouse CD49b Antibody and APC Anti-Mouse FcεRIα Antibody (Left). Bone marrow cells are stained with PE Anti-Mouse CD49b Antibody and APC Armenian Hamster IgG Isotype Control (Right).

### Preparation & Storage

<b>Storage</b>	Keep as concentrated solution. This product can be stored at 2-8°C for 24 months. Please protected from prolonged exposure to light and do not freeze.
<b>Shipping</b>	Ice bag

### Antigen Information

<b>Alternate Names</b>	Fc-epsilon RI-alpha;FcERI;Fcer1a;High affinity immunoglobulin epsilon receptor subunit alpha
<b>Uniprot ID</b>	P20489

### For Research Use Only

**Gene ID**

14125

**Background**

FcεRIα is a transmembrane protein belonging to the Ig superfamily. FcεRIα forms a tetrameric complex with one β and two γ-subunits. The FcεRI complex plays an important role in triggering IgE-mediated allergic reactions. It is abundantly expressed on mast and basophils and up-regulated by the presence of IgE. Following stimulation via FcεRIα, mast cells and basophils release bioactive chemical mediators such as histamine, resulting in the initiation of allergic reactions. Cross linking of the high-affinity receptor for IgE on tissue mast cells triggers immediate hypersensitivity with local symptoms. The MAR-1 monoclonal antibody reacts with the FcεRIα subunit.