

Recombinant Alkaline Phosphatase/ALPL Monoclonal Antibody

catalog number: **AN300088P**

Note: *Centrifuge before opening to ensure complete recovery of vial contents.*

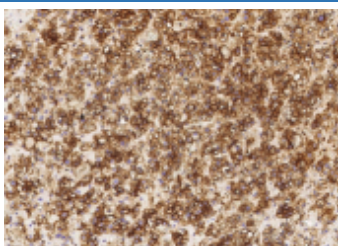
Description

Reactivity	Human
Immunogen	A synthetic peptide corresponding to the center region of the Human Alkaline Phosphatase / ALPL
Host	Rabbit
Isotype	IgG
Clone	11A5
Purification	Protein A
Buffer	0.2 µm filtered solution in PBS

Applications Recommended Dilution

IHC-P	1:250-1:1000
--------------	--------------

Data



Immunohistochemistry of paraffin-embedded human adrenal gland using Alkaline Phosphatase / ALPL Monoclonal Antibody at dilution of 1:500.

Preparation & Storage

Storage	This antibody can be stored at 2°C-8°C for one month without detectable loss of activity. Antibody products are stable for twelve months from date of receipt when stored at -20°C to -80°C. Preservative-Free. Avoid repeated freeze-thaw cycles.
Shipping	Ice bag

Background

The liver, bone and kidney Alkaline Phosphatase, also known as tissue non-specific Alkaline Phosphatase, is a glycosyl phosphatidylinositol (GPI) anchored protein. Human liver/bone/kidney Alkaline Phosphatase shares 90% amino acid sequence homology with the mouse enzyme.

For Research Use Only