

# Recombinant Rat SLAMF1/CD150 / SLAM protein (His tag)



Catalog Number: PDER100093

**Note:** Centrifuge before opening to ensure complete recovery of vial contents.

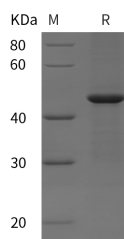
## Description

<b>Synonyms</b>	Signaling lymphocytic activation molecule family member 1; Slamf1; Similar to signaling lymphocytic activation molecule;
<b>Species</b>	Rat
<b>Expression Host</b>	E.coli
<b>Sequence</b>	Thr 25-Ser 345
<b>Accession</b>	D3ZAD7
<b>Calculated Molecular Weight</b>	35.2 kDa
<b>Observed molecular weight</b>	45 kDa
<b>Tag</b>	N-His

## Properties

<b>Purity</b>	> 95 % as determined by reducing SDS-PAGE.
<b>Endotoxin</b>	Please contact us for more information.
<b>Storage</b>	Generally, lyophilized proteins are stable for up to 12 months when stored at -20 to -80°C. Reconstituted protein solution can be stored at 4-8°C for 2-7 days. Aliquots of reconstituted samples are stable at < -20°C for 3 months.
<b>Shipping</b>	This product is provided as lyophilized powder which is shipped with ice packs.
<b>Formulation</b>	Lyophilized from sterile PBS, pH 7.4. Normally 5 % - 8 % trehalose, mannitol and 0.01 % Tween80 are added as protectants before lyophilization. Please refer to the specific buffer information in the printed manual.
<b>Reconstitution</b>	Please refer to the printed manual for detailed information.

## Data



> 95 % as determined by reducing SDS-PAGE.

## Background

CD150/signaling lymphocytic activation molecule (SLAM) is a cell surface sialylated phosphoglycoprotein and belongs to the CD2 subset of the Ig superfamily of type I transmembrane glycoproteins. The CD150 receptor is expressed on thymocytes, activated and memory T cells, B cells, platelets, natural killer T cells, and mature dendritic cells, and is also detected on tumor cells of Hodgkin's lymphoma (HL) and diffuse large B-cell lymphoma with an activated B cell phenotype. Additionally, it is the immune cell receptor for measles virus (MV). As a self-ligand, CD150 performs diverse immunologic functions including T/B-cell costimulation, induction of IFN- $\gamma$  in Th1 T-cell clones, redirection of Th2 clones to a Th1 or Th0 phenotype, and inhibition of apoptosis in B cells. Furthermore, CD150 was shown to be the

## For Research Use Only

A Reliable Research Partner in Life Science and Medicine

Toll-free: 1-888-852-8623

Web: [www.elabscience.com](http://www.elabscience.com)

Tel: 1-832-243-6086

Email: [techsupport@elabscience.com](mailto:techsupport@elabscience.com)

Fax: 1-832-243-6017

# Recombinant Rat SLAMF1/CD150 / SLAM protein (His tag)



Catalog Number: PDER100093

---

second receptor for measles virus in addition to CD46, and the distribution of SLAM on various cell lines is consistent with their susceptibility to clinical isolates of measles virus.

---

## For Research Use Only

A Reliable Research Partner in Life Science and Medicine

Toll-free: 1-888-852-8623

Tel: 1-832-243-6086

Fax: 1-832-243-6017

Web: [www.elabscience.com](http://www.elabscience.com)

Email: [techsupport@elabscience.com](mailto:techsupport@elabscience.com)