

# UBE2O Polyclonal Antibody

Catalog Number: E-AB-67078

**Note:** Centrifuge before opening to ensure complete recovery of vial contents.

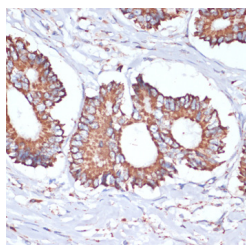
## Description

|                     |  |
|---------------------|--|
| <b>Reactivity</b>   | Human  |
| <b>Immunogen</b>    | Recombinant fusion protein of human UBE2O (NP_071349.3). |
| <b>Host</b>         | Rabbit   |
| <b>Isotype</b>      | IgG  |
| <b>Purification</b> | Affinity purification                                    |
| <b>Conjugation</b>  | Unconjugated   |
| <b>Formulation</b>  | PBS with 0.02% sodium azide, 50% glycerol, pH7.3.        |

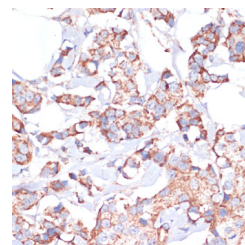
## Applications Recommended Dilution

|            |            |
|------------|------------|
| <b>IHC</b> | 1:50-1:200 |
|------------|------------|

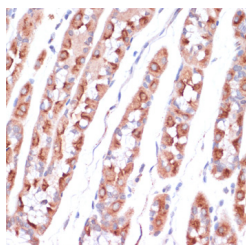
## Data



Immunohistochemistry of paraffin-embedded Human colon carcinoma using UBE2O Polyclonal Antibody at dilution of 1:100 (40x lens).



Immunohistochemistry of paraffin-embedded Human breast cancer using UBE2O Polyclonal Antibody at dilution of 1:100 (40x lens).



Immunohistochemistry of paraffin-embedded Human stomach using UBE2O Polyclonal Antibody at dilution of 1:100 (40x lens).

## Preparation & Storage

**Storage** Store at -20°C. Avoid freeze / thaw cycles.

## Background

UBE2O (Ubiquitin Conjugating Enzyme E2 O) is a Protein Coding gene. Diseases associated with UBE2O include Pontocerebellar Hypoplasia, Type 2A. Among its related pathways are Innate Immune System and Class I MHC mediated antigen processing and presentation. Gene Ontology (GO) annotations related to this gene include ubiquitin-protein transferase activity. An important paralog of this gene is UBE2Z.

## For Research Use Only

A Reliable Research Partner in Life Science and Medicine

Toll-free: 1-888-852-8623

Web: [www.elabscience.com](http://www.elabscience.com)

Tel: 1-832-243-6086

Email: [techsupport@elabscience.com](mailto:techsupport@elabscience.com)

Fax: 1-832-243-6017