

MHC class I Monoclonal Antibody(W6/32)

catalog number: E-AB-48031

Note: Centrifuge before opening to ensure complete recovery of vial contents.

Description

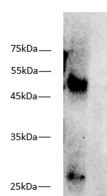
Reactivity	Mouse
Immunogen	Membrane of human tonsil cells
Host	Mouse
Isotype	IgG2a
Clone	5E2
Purification	Protein A/G Purification
Conjugation	Unconjugated
buffer	PBS with 0.02% sodium azide, 1% protective protein and 50% glycerol, pH 7.4

Applications

Recommended Dilution

WB	1:1000-2000
-----------	-------------

Data



Western blot of mouse spleen lysates with anti-MHC I antibody at dilution of 1:1000.

Observed-MV:44 kDa

Calculated-MV:40 kDa

Preparation & Storage

Storage	Store at -20°C Valid for 12 months. Avoid freeze / thaw cycles.
Shipping	The product is shipped with ice pack, upon receipt, store it immediately at the temperature recommended.

Background

MHC class I Antibody (W6/32) is a high quality monoclonal MHC class I antibody (also designated MHC antibody, MHC class 1 antibody, HLA-A (Major Histocompatibility Complex, Class 1a) antibody, HLA-B (Major Histocompatibility Complex, Class 1b) antibody, HLA-C (Major Histocompatibility Complex, Class 1c) antibody, MHC class 1 heterodimer receptor heavy chain component antibody, or MHC class I cell surface receptor antibody) suitable for the detection of the MHC class I protein of human origin.

For Research Use Only