

# Recombinant Human PSA/KLK3 Protein (His Tag)

Catalog Number:PKSH031436



**Note:** Centrifuge before opening to ensure complete recovery of vial contents.

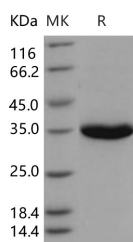
## Description

<b>Synonyms</b>	APS;Hk3;KLK2A1;PSA;Prostate-Specific Antigen;PSA;Gamma-Seminoprotein;Seminin;Kallikrein-3;P-30 Antigen;Semenogelase;
<b>Species</b>	Human
<b>Expression Host</b>	HEK293 Cells
<b>Sequence</b>	Met 1-Pro 261
<b>Accession</b>	P07288
<b>Calculated Molecular Weight</b>	28.3 kDa
<b>Observed molecular weight</b>	35 kDa
<b>Tag</b>	C-His
<b>Bioactivity</b>	Measured by its ability to cleave the colorimetric peptide substrate, Succinyl-Arg-Pro-Tyr-p-Nitroanilide(Suc-RPY-pNA). The specific activity is > 100 pmoles/min/μg. (Activation description: The proenzyme needs to be activated by Thermolysin for an activated form)

## Properties

<b>Purity</b>	> 95 % as determined by reducing SDS-PAGE.
<b>Endotoxin</b>	< 1.0 EU per μg of the protein as determined by the LAL method.
<b>Storage</b>	Generally, lyophilized proteins are stable for up to 12 months when stored at -20 to -80°C. Reconstituted protein solution can be stored at 4-8°C for 2-7 days. Aliquots of reconstituted samples are stable at < -20°C for 3 months.
<b>Shipping</b>	This product is provided as lyophilized powder which is shipped with ice packs.
<b>Formulation</b>	Lyophilized from sterile PBS, pH 7.4 Normally 5 % - 8 % trehalose, mannitol and 0.01 % Tween80 are added as protectants before lyophilization. Please refer to the specific buffer information in the printed manual.
<b>Reconstitution</b>	Please refer to the printed manual for detailed information.

## Data



> 95 % as determined by reducing SDS-PAGE.

## Background

KLK3(Kallikrein 3); also known as Prostate Specific Antigen (PSA); kallikrein-related peptidase 3; Gamma-seminoprotein; is a secreted protein of the glandular kallikrein subfamily of serine proteases. KLK3 contains one peptidase S1 domain. KLK3 is a glycoprotein produced almost exclusively by the prostate gland. Growing evidence suggests that

## For Research Use Only

A Reliable Research Partner in Life Science and Medicine

Toll-free: 1-888-852-8623

Web: [www.elabscience.com](http://www.elabscience.com)

Tel: 1-832-243-6086

Email: [techsupport@elabscience.com](mailto:techsupport@elabscience.com)

Fax: 1-832-243-6017

# Recombinant Human PSA/KLK3 Protein (His Tag)

Catalog Number:PKSH031436



many kallikreins are implicated in carcinogenesis and some have potential as novel cancer and other disease biomarkers.

---

## For Research Use Only

A Reliable Research Partner in Life Science and Medicine

Toll-free: 1-888-852-8623

Tel: 1-832-243-6086

Fax: 1-832-243-6017

Web: [www.elabscience.com](http://www.elabscience.com)

Email: [techsupport@elabscience.com](mailto:techsupport@elabscience.com)