

Note: Centrifuge before opening to ensure complete recovery of vial contents.

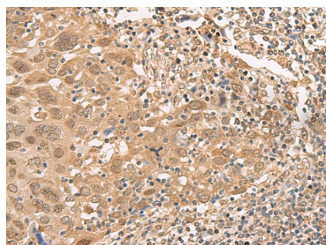
Description

Reactivity	Human
Immunogen	Fusion protein of human ISCU
Host	Rabbit
Isotype	IgG
Purification	Antigen affinity purification
Conjugation	Unconjugated
Formulation	PBS with 0.05% NaN ₃ and 40% Glycerol, pH7.4

Applications Recommended Dilution

IHC	1:40-1:200
ELISA	1:5000-1:10000

Data



Immunohistochemistry of paraffin-embedded Human cervical cancer tissue using ISCU Polyclonal Antibody at dilution of 1:45(×200)

Preparation & Storage

Storage Store at -20°C. Avoid freeze / thaw cycles.

Background

This gene encodes a component of the iron-sulfur (Fe-S) cluster scaffold. Fe-S clusters are cofactors that play a role in the function of a diverse set of enzymes, including those that regulate metabolism, iron homeostasis, and oxidative stress response. Alternative splicing results in transcript variants encoding different protein isoforms that localize either to the cytosol or to the mitochondrion. Mutations in this gene have been found in patients with hereditary myopathy with lactic acidosis. A disease-associated mutation in an intron may activate a cryptic splice site, resulting in the production of a splice variant encoding a putatively non-functional protein. A pseudogene of this gene is present on chromosome 1.

For Research Use Only

A Reliable Research Partner in Life Science and Medicine

Toll-free: 1-888-852-8623

Web: www.elabscience.com

Tel: 1-832-243-6086

Email: techsupport@elabscience.com

Fax: 1-832-243-6017