

EIF4A1 Monoclonal Antibody

Catalog Number:E-AB-22076



Note: Centrifuge before opening to ensure complete recovery of vial contents.

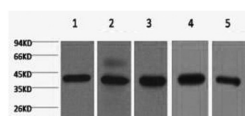
Description

Reactivity	Human,Mouse,Rat
Immunogen	Synthetic Peptide
Host	Mouse
Isotype	IgG
Clone	Clone:2B6
Purification	Protein A purification
Conjugation	Unconjugated
Formulation	PBS with 0.02% sodium azide and 50% glycerol pH 7.4.

Applications Recommended Dilution

WB	1:500-1:3000
IHC	1:50-1:300
IF	1:100-1:200

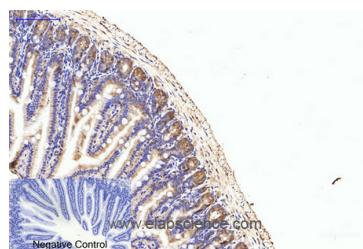
Data



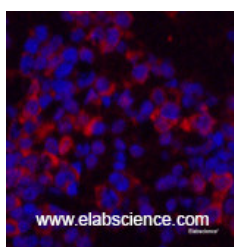
www.elabscience.com

Western Blot analysis of 1) 293T, 2) HeLa, 3) HepG2, 4) Mouse brain with eIF4A1 Monoclonal Antibody.

Observed Mw:48kDa



Immunohistochemistry of paraffin-embedded Mouse colon tissue using eIF4A1 Monoclonal Antibody at dilution of 1:200.



www.elabscience.com

Immunofluorescence analysis of Mouse spleen tissue using eIF4A1 Monoclonal Antibody at dilution of 1:200.

Preparation & Storage

Storage Store at -20°C. Avoid freeze / thaw cycles.

Background

EIF4A1 is an ATP-dependent RNA helicase which is a subunit of the eIF4F complex involved in cap recognition and is

For Research Use Only

A Reliable Research Partner in Life Science and Medicine

Toll-free: 1-888-852-8623

Web: www.elabscience.com

Tel: 1-832-243-6086

Email: techsupport@elabscience.com

Fax: 1-832-243-6017

EIF4A1 Monoclonal Antibody

Catalog Number:E-AB-22076



required for mRNA binding to ribosome. In the current model of translation initiation, eIF4A unwinds RNA secondary structures in the 5'-UTR of mRNAs which is necessary to allow efficient binding of the small ribosomal subunit, and subsequent scanning for the initiator codon.

For Research Use Only

A Reliable Research Partner in Life Science and Medicine

Toll-free: 1-888-852-8623

Tel: 1-832-243-6086

Fax: 1-832-243-6017

Web: www.elabscience.com

Email: techsupport@elabscience.com