

STOML2 Polyclonal Antibody

Catalog Number:E-AB-18689



Note: Centrifuge before opening to ensure complete recovery of vial contents.

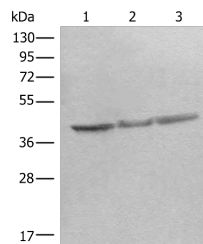
Description

Reactivity	Human, Mouse, Rat
Immunogen	Fusion protein of human STOML2
Host	Rabbit
Isotype	IgG
Purification	Antigen affinity purification
Conjugation	Unconjugated
Formulation	PBS with 0.05% NaN ₃ and 40% Glycerol,pH7.4

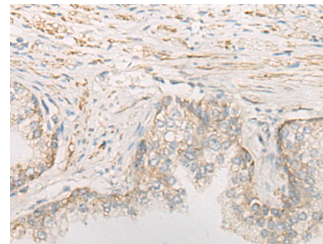
Applications Recommended Dilution

WB	1:500-1:2000
IHC	1:20-1:100
ELISA	1:5000-1:10000

Data



Western blot analysis of Mouse brain tissue Rat heart tissue Rat brain tissue lysates using STOML2 Polyclonal Antibody at dilution of 1:350
Observed MW:Refer to figures
Calculated Mw:39 kDa



Immunohistochemistry of paraffin-embedded Human prost at e cancer tissue using STOML2 Polyclonal Antibody at dilution of 1:25(×200)

Preparation & Storage

Storage Store at -20°C. Avoid freeze / thaw cycles.

Background

Human stomatin (band 7.2b) is a 31-kDa erythrocyte membrane protein of unknown function but implicated in the control of ion channel permeability, mechanoreception, and lipid domain organization. Stomatin (EPB72)-like 2 (STOML2, synonyms: SLP-2, HSPC108) is a 38.5-kDa protein that is overall approximately 20% similar to human stomatin. STOML2 is also present in mature human erythrocytes, but lacks a characteristic NH₂-terminal hydrophobic domain found in other stomatin homologues. STOML2 may link stomatin or other integral membrane proteins to the peripheral cytoskeleton and thereby play a role in regulating ion channel conductances or the organization of sphingolipid and cholesterol-rich lipid rafts.

For Research Use Only

A Reliable Research Partner in Life Science and Medicine

Toll-free: 1-888-852-8623

Web: www.elabscience.com

Tel: 1-832-243-6086

Email: techsupport@elabscience.com

Fax: 1-832-243-6017