

HBE1 Polyclonal Antibody

catalog number: E-AB-18898

Note: Centrifuge before opening to ensure complete recovery of vial contents.

Description

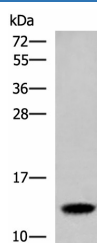
Reactivity	Human
Immunogen	Fusion protein of human HBE1
Host	Rabbit
Isotype	IgG
Purification	Antigen affinity purification
Conjugation	Unconjugated
buffer	Phosphate buffered solution, pH 7.4, containing 0.05% stabilizer and 50% glycerol.

Applications

Recommended Dilution

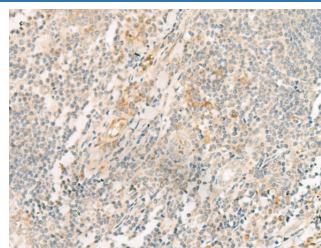
WB	1:500-1:2000
IHC	1:30-1:150

Data



Western blot analysis of Human placenta tissue lysate using HBE1 Polyclonal Antibody at dilution of 1:300

Observed-MV: Refer to figures
Calculated-MV: 16 kDa



Immunohistochemistry of paraffin-embedded Human tonsil tissue using HBE1 Polyclonal Antibody at dilution of 1:30 (x200)

Preparation & Storage

Storage	Store at -20°C Valid for 12 months. Avoid freeze / thaw cycles.
Shipping	The product is shipped with ice pack, upon receipt, store it immediately at the temperature recommended.

Background

The hemoglobin molecule is a tetramer consisting of two α -globin-like polypeptide chains and two β -globin-like chains. The human hemoglobin genes are expressed in a tightly developmentally controlled fashion. ϵ -globin (HBE1) is the predominantly expressed gene during the embryonic stage. The epsilon hemoglobin chain seems to be the best marker for fetal nucleated red blood cells (NRBCs). Anti-HBE1 may be used to label and isolate fetal cells from maternal blood and can be useful in prenatal diagnosis. This antibody specifically recognizes the HBE1 and doesn't cross-react with other globin chains.

For Research Use Only