

Recombinant Human MAP1D Protein (His Tag)

Catalog Number:PKSH031376



Note: Centrifuge before opening to ensure complete recovery of vial contents.

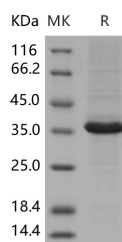
Description

Synonyms	Methionine Aminopeptidase 1D Mitochondrial;Methionyl Aminopeptidase Type 1D Mitochondrial;METAP1D;MAP1D;MAP 1D;MetAP 1D;Metap11
Species	Human
Expression Host	Baculovirus-Insect Cells
Sequence	Arg 44-Ala 335
Accession	NP_954697.1
Calculated Molecular Weight	33.4 kDa
Observed molecular weight	36 kDa
Tag	C-His
Bioactivity	Measure by its ability to remove methionine from a fluorogenic peptide substrate H-Met-Gly-Pro-AMC, R&D Systems, Catalog#ES017.The resulting GP-AMC is cleaved by human DPPIV/CD26, R&D Systems, Catalog#1180SE. The specific activity is > 30 pmoles/min/μg.

Properties

Purity	> 92 % as determined by reducing SDS-PAGE.
Endotoxin	< 1.0 EU per μg of the protein as determined by the LAL method.
Storage	Generally, lyophilized proteins are stable for up to 12 months when stored at -20 to -80°C. Reconstituted protein solution can be stored at 4-8°C for 2-7 days. Aliquots of reconstituted samples are stable at < -20°C for 3 months.
Shipping	This product is provided as lyophilized powder which is shipped with ice packs.
Formulation	Lyophilized from sterile 50mM Tris, 100mM NaCl, pH 8.0 Normally 5 % - 8 % trehalose, mannitol and 0.01% Tween80 are added as protectants before lyophilization. Please refer to the specific buffer information in the printed manual.
Reconstitution	Please refer to the printed manual for detailed information.

Data



> 92 % as determined by reducing SDS-PAGE.

Background

Methionine aminopeptidase 1D, also known as MAP1D, is a member of thepeptidase M24A family. N-terminal methionine removal is an important cellular process required for proper biological activity, subcellular localization, and eventual degradation of many proteins. The enzymes that catalyze this reaction are called Methionine aminopeptidases

For Research Use Only

A Reliable Research Partner in Life Science and Medicine

Toll-free: 1-888-852-8623

Web: www.elabscience.com

Tel: 1-832-243-6086

Email: techsupport@elabscience.com

Fax: 1-832-243-6017

Recombinant Human MAP1D Protein (His Tag)

Catalog Number:PKSH031376



(MAPs). MAP1D is overexpressed in colon cancer cell lines and colon tumors as compared to normal tissues (at protein level). Downregulation of MAP1D expression by shRNA in HCT-116 colon carcinoma cells reduces anchorage-independent growth in soft agar. MAP1D binds two cobalt ions per subunit. The true nature of the physiological cofactor is under debate. MAP1D is also active with zinc, manganese or divalent ions. MAP1D removes the amino-terminal methionine from nascent proteins. It may also play an important role in colon tumorigenesis.

For Research Use Only

A Reliable Research Partner in Life Science and Medicine

Toll-free: 1-888-852-8623

Web: www.elabscience.com

Tel: 1-832-243-6086

Email: techsupport@elabscience.com

Fax: 1-832-243-6017