

# Recombinant Mouse IL-23 Receptor/IL-23R Protein (Fc Tag)

**DIA • AN**<sup>®</sup>  
by Elabscience

Catalog Number: PKSM041055

**Note:** Centrifuge before opening to ensure complete recovery of vial contents.

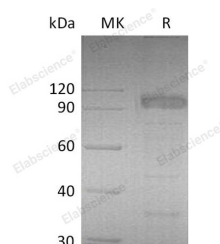
## Description

<b>Synonyms</b>	Interleukin-23 receptor; IL23r; IL-23 receptor; IL-23R; interleukin 23 receptor
<b>Species</b>	Mouse
<b>Expression Host</b>	HEK293 Cells
<b>Sequence</b>	Gly24-Asp372
<b>Accession</b>	Q8K4B4
<b>Calculated Molecular Weight</b>	67.4 kDa
<b>Observed molecular weight</b>	90-110 kDa
<b>Tag</b>	C-Fc

## Properties

<b>Purity</b>	> 90 % as determined by reducing SDS-PAGE.
<b>Endotoxin</b>	< 1.0 EU per µg of the protein as determined by the LAL method.
<b>Storage</b>	Generally, lyophilized proteins are stable for up to 12 months when stored at -20 to -80°C. Reconstituted protein solution can be stored at 4-8°C for 2-7 days. Aliquots of reconstituted samples are stable at < -20°C for 3 months.
<b>Shipping</b>	This product is provided as lyophilized powder which is shipped with ice packs.
<b>Formulation</b>	Lyophilized from a 0.2 µm filtered solution of PBS, pH 7.4. Normally 5 % - 8 % trehalose, mannitol and 0.01% Tween80 are added as protectants before lyophilization. Please refer to the specific buffer information in the printed manual.
<b>Reconstitution</b>	Please refer to the printed manual for detailed information.

## Data



> 90 % as determined by reducing SDS-PAGE.

## Background

Interleukin 23 receptor (IL23R), a heterodimer of the IL12 receptor  $\beta 1$  (IL12R $\beta 1$ ) and IL12R $\beta 2$ , is a type I cytokine receptor for IL23. IL23R is comprised of two subunits, the IL12R $\beta 1$  subunit, which is shared with several cytokines, and a subunit that is unique to IL-23. IL23, after binding to IL23R, activates memory T cells and mediates pro-inflammatory activities in part by the production of IL17 through activation of TH17 lymphocytes. IL23R is expressed on T cells, NK cells, dendritic cells, and macrophages. In fact, polymorphisms of the IL23R gene were reported to be associated with susceptibility to inflammatory diseases and autoimmune diseases such as psoriasis, multiple sclerosis, Graves's ophthalmopathy and inflammatory bowel diseases. The IL23R is known to be critically involved in the carcinogenesis of different malignant tumor.

## For Research Use Only

A Reliable Research Partner in Life Science and Medicine

Toll-free: 1-888-852-8623

Tel: 1-832-243-6086

Fax: 1-832-243-6017

Web: [www.elabscience.com](http://www.elabscience.com)

Email: [techsupport@elabscience.com](mailto:techsupport@elabscience.com)