

CD248 Polyclonal Antibody

Catalog Number: E-AB-65954



Note: Centrifuge before opening to ensure complete recovery of vial contents.

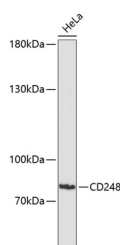
Description

Reactivity	Human
Immunogen	Recombinant fusion protein of human CD248 (NP_065137.1).
Host	Rabbit
Isotype	IgG
Purification	Affinity purification
Conjugation	Unconjugated
Formulation	PBS with 0.02% sodium azide, 50% glycerol, pH7.3.

Applications Recommended Dilution

WB	1:500-1:2000
-----------	--------------

Data



Western blot analysis of extracts of HeLa cells using CD248 Polyclonal Antibody at dilution of 1:3000.

Observed MW:81kDa
Calculated Mw:46kDa/80kDa

Preparation & Storage

Storage Store at -20°C. Avoid freeze / thaw cycles.

Background

CD248 (CD248 Molecule) is a Protein Coding gene. Diseases associated with CD248 include Vascular Cancer and Adult Fibrosarcoma. Gene Ontology (GO) annotations related to this gene include calcium ion binding and extracellular matrix binding. An important paralog of this gene is CD93.

For Research Use Only

A Reliable Research Partner in Life Science and Medicine

Toll-free: 1-888-852-8623

Web: www.elabscience.com

Tel: 1-832-243-6086

Email: techsupport@elabscience.com

Fax: 1-832-243-6017