

# Recombinant Mouse Interleukin-13/IL-13 Protein (His Tag)

Catalog Number: PKSM041074



**Note:** Centrifuge before opening to ensure complete recovery of vial contents.

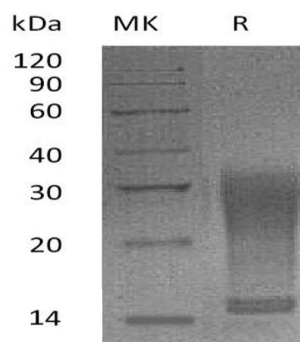
## Description

<b>Species</b>	Mouse
<b>Mol_Mass</b>	12.7 kDa
<b>Accession</b>	P20109
<b>Bio-activity</b>	Measured in a cell proliferation assay using TF- 1 human erythroleukemic cells. The ED <sub>50</sub> for this effect is 2-13 ng/ml.

## Properties

<b>Purity</b>	> 95 % as determined by reducing SDS-PAGE.
<b>Endotoxin</b>	< 1.0 EU per µg of the protein as determined by the LAL method.
<b>Storage</b>	Generally, lyophilized proteins are stable for up to 12 months when stored at -20 to -80 °C. Reconstituted protein solution can be stored at 4-8°C for 2-7 days. Aliquots of reconstituted samples are stable at < -20°C for 3 months.
<b>Shipping</b>	This product is provided as lyophilized powder which is shipped with ice packs.
<b>Formulation</b>	Lyophilized from a 0.2 µm filtered solution of PBS, pH 7.4. Normally 5% - 8% trehalose, mannitol and 0.01% Tween 80 are added as protectants before lyophilization. Please refer to the specific buffer information in the printed manual.
<b>Reconstitution</b>	Please refer to the printed manual for detailed information.

## Data



> 95 % as determined by reducing SDS-PAGE.

## Background

Mouse interleukin 13 (mIL-13) is a pleiotropic cytokine produced by activated Th2 cells. IL-13 induces B cell proliferation and immunoglobulin production. It contains a four helical bundle with two internal disulfide bonds. Mouse IL13 shares 58% sequence identity with human protein and exhibits cross-species activity. IL13 signals via receptor IL13R (type2, IL4R) and activates STAT-6. IL13 initially binds IL-13Rα1 with low affinity and triggers association of IL4Rα, generating a high affinity heterodimeric receptor IL13R and eliciting downstream signals. IL13 also binds IL-13Rα2 with high affinity, which plays a role in a negative feedback system of IL13 signaling. IL13 is an important mediator of allergic inflammation and disease.

## For Research Use Only

A Reliable Research Partner in Life Science and Medicine  
Tel:400-999-2100

Email:[techsupport@elabscience.cn](mailto:techsupport@elabscience.cn)

Web:[www.elabscience.cn](http://www.elabscience.cn)

Rev. V3.2