

# Recombinant Cathepsin B Monoclonal Antibody

Catalog Number: E-AB-81543



**Note:** Centrifuge before opening to ensure complete recovery of vial contents.

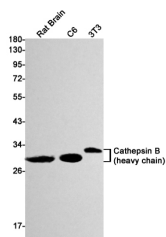
## Description

<b>Reactivity</b>	Mouse,Rat
<b>Immunogen</b>	Recombinant protein of mouse Cathepsin B
<b>Host</b>	Rabbit
<b>Isotype</b>	IgG
<b>Clone</b>	R08-7H4
<b>Purification</b>	Affinity Purified
<b>Conjugation</b>	Unconjugated
<b>Formulation</b>	50mM Tris-Glycine(pH 7.4), 0.15M NaCl, 40% Glycerol, 0.01% Sodium azide and 0.05% protective protein

## Applications Recommended Dilution

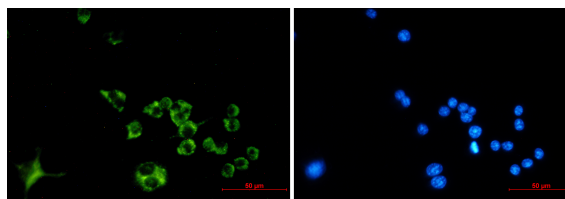
<b>WB</b>	1:500-1:1000
<b>IF</b>	1:50-1:100

## Data



Western blot detection of Cathepsin B in Rat Brain, C6, 3T3 cell lysates using Cathepsin B Rabbit mAb (1:1000 diluted). Predicted band size: 37kDa. Observed band size: 27,30kDa.

**Observed Mw: 27/30kDa**  
**Calculated Mw: 37kDa**



Immunofluorescence of Cathepsin B (green) in Raw264.7 using Cathepsin B antibody at dilution 1:50, and DAPI (blue)

## Preparation & Storage

**Storage** Store at -20°C. Avoid freeze / thaw cycles.

## Background

Thiol protease which is believed to participate in intracellular degradation and turnover of proteins. Cleaves matrix extracellular phosphoglycoprotein MEPE. Has also been implicated in tumor invasion and metastasis.

## For Research Use Only

A Reliable Research Partner in Life Science and Medicine

Toll-free: 1-888-852-8623

Web: [www.elabscience.com](http://www.elabscience.com)

Tel: 1-832-243-6086

Email: [techsupport@elabscience.com](mailto:techsupport@elabscience.com)

Fax: 1-832-243-6017