

Recombinant Rab11 Monoclonal Antibody

catalog number: **AN301312L**

Note: Centrifuge before opening to ensure complete recovery of vial contents.

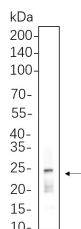
Description

Reactivity	Human;Mouse;Rat
Immunogen	Recombinant Human Rab11 protein
Host	Rabbit
Isotype	IgG, κ
Clone	7C14
Purification	Protein A
Buffer	PBS, 50% glycerol, 0.05% Proclin 300, 0.05% protein protectant.

Applications Recommended Dilution

WB	1:2000-1:10000
-----------	----------------

Data



Western Blot with Recombinant Rab11 Monoclonal Antibody
at dilution of 1:1000 dilution. Lane A: A549 cell lysate.

Observed-MW:24 kDa

Calculated-MW:24 kDa

Preparation & Storage

Storage	Store at -20°C Valid for 12 months. Avoid freeze / thaw cycles.
Shipping	Ice bag

Background

The protein encoded by this gene belongs to the Rab family of the small GTPase superfamily. It is associated with both constitutive and regulated secretory pathways, and may be involved in protein transport. Two transcript variants encoding different isoforms have been found for this gene.

For Research Use Only

Toll-free: 1-888-852-8623
Web: www.elabscience.com

Tel: 1-832-243-6086
Email: techsupport@elabscience.com

Fax: 1-832-243-6017

Rev. V1.0