

## Elab Fluor® 488 Anti-Human Ki-67 Antibody[3B7]

Catalog Number: AN00540L

**Note:** Centrifuge before opening to ensure complete recovery of vial contents.

### Description

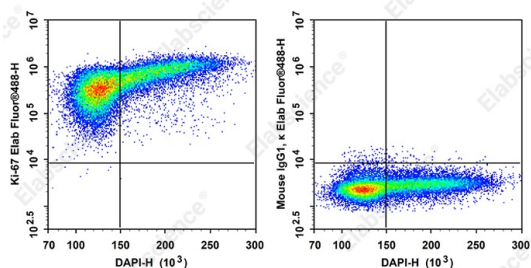
<b>Reactivity</b>	Human
<b>Host</b>	Mouse
<b>Isotype</b>	Mouse IgG1, κ
<b>Clone No.</b>	3B7
<b>Isotype Control</b>	Elab Fluor® 488 Mouse IgG1, κ Isotype Control[MOPC-21] [Product E-AB-F09792L]
<b>Conjugation</b>	Elab Fluor® 488
<b>Conjugation Information</b>	Elab Fluor® 488 is designed to be excited by the Blue laser (488 nm) and detected using an optical filter centered near 520 nm (e.g., a 525/40 nm bandpass filter).
<b>Storage Buffer</b>	Phosphate buffered solution, pH 7.2, containing 0.09% stabilizer.

### Applications

### Recommended usage

<b>FCM</b>	Each lot of this antibody is quality control tested by flow cytometric analysis. <b>The amount of the reagent is suggested to be used 5 μL of antibody per test (million cells in 100 μL staining volume or per 100 μL of whole blood).</b> Please check your vial before the experiment. Since applications vary, the appropriate dilutions must be determined for individual use.
------------	---

### Data



Staining of proliferating Human MOLT-4 cells with DAPI

Reagent and Elab Fluor® 488 Anti-Human Ki-67 Antibody[3B7] (left) or Elab Fluor® 488 Mouse IgG1, κ Isotype Control (right). Total viable cells were used for analysis.

### Preparation & Storage

<b>Storage</b>	Keep as concentrated solution. This product can be stored at 2-8°C for 24 months. Please protected from prolonged exposure to light and do not freeze.
<b>Shipping</b>	Ice bag

### Antigen Information

<b>Alternate Names</b>	Antigen Ki-67
<b>Uniprot ID</b>	P46013
<b>Gene ID</b>	4288

### For Research Use Only

## Background

Antigen Ki-67 is a nuclear protein expressed as two isoforms with molecular weights of 395 and 345 kD. Both isoforms contain one forkhead-associated domain and 16 concatenated "Ki-67 repeats," each containing the epitope recognized by the mAb Ki-67. The antigen Ki-67 interacts with Hklp2, hNIFK, and chromobox protein homolog 1, 3, and 5. Ki-67 is required for cell proliferation and its expression is restricted to the phases G1, S, G2, and M of the cell cycle. This characteristic makes Ki-67 an excellent marker for proliferating cells and is commonly used as one of the prognostic factors in cancer studies. Ki-67 has also been used to study myocyte proliferation after myocardial infarction as well as lymphocyte proliferation during infection, and has been used in neurons of patients with different neuropathologies.