

Recombinant eRF3/GSPT1 Monoclonal Antibody

catalog number: **AN301511L**

Note: Centrifuge before opening to ensure complete recovery of vial contents.

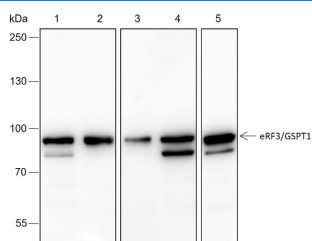
Description

Reactivity	Human;Rat;Mouse;Monkey
Immunogen	Recombinant human eRF3/GSPT1 fragment
Host	Rabbit
Isotype	IgG, κ
Clone	A210
Purification	Protein A purified
Buffer	PBS, 50% glycerol, 0.05% Proclin 300, 0.05% protein protectant.

Applications Recommended Dilution

WB	1:500-1:2000
-----------	--------------

Data



Western Blot with eRF3/GSPT1 Monoclonal Antibody at dilution of 1:2000. Lane 1: T47D, Lane 2: PC-3, Lane 3: COS-7, Lane 4: NIH-3T3, Lane 5: PC-12

Observed-MW:80 kDa

Calculated-MW:56 kDa

Preparation & Storage

Storage	Store at -20°C Valid for 12 months. Avoid freeze / thaw cycles.
Shipping	Ice bag

Background

Involved in translation termination in response to the termination codons UAA, UAG and UGA. Stimulates the activity of ETF1. Involved in regulation of mammalian cell growth. Component of the transient SURF complex which recruits UPF1 to stalled ribosomes in the context of nonsense-mediated decay (NMD) of mRNAs containing premature stop codons. Required for SHFL-mediated translation termination which inhibits programmed ribosomal frameshifting (-1PRF) of mRNA from viruses and cellular genes.

For Research Use Only