

Recombinant ACE2 Monoclonal Antibody

catalog number: AN301988L

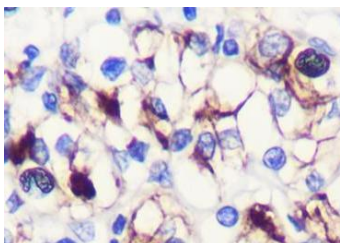
Note: Centrifuge before opening to ensure complete recovery of vial contents.

Description

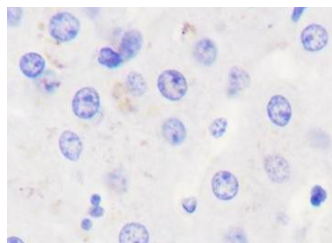
Reactivity	Human;Mouse
Immunogen	Peptide. This information is proprietary to PTMab.
Host	Rabbit
Isotype	IgG, κ
Clone	A708
Purification	Protein A purified
Buffer	PBS, 50% glycerol, 0.05% Proclin 300, 0.05% protein protectant.

Applications Recommended Dilution

WB	1:1000
IHC	1:500-1:1000



Immunohistochemistry of paraffin-embedded Human renal clear cell carcinoma using ACE2 Monoclonal Antibody at dilution of 1:1000.



Immunohistochemistry of paraffin-embedded Human liver (negative tissue) using ACE2 Monoclonal Antibody at dilution of 1:1000.

Preparation & Storage

Storage	Store at -20°C Valid for 12 months. Avoid freeze / thaw cycles.
Shipping	Ice bag

Background

ACE2 is a carboxypeptidase that catalyses the conversion of angiotensin I to angiotensin 1-9, or of angiotensin II to the vasodilator angiotensin 1-7. ACE2 is a critical component in the renin-angiotensin system (RAS). ACE2 is predominantly expressed in vascular endothelial cells of the heart and kidney and Leydig and Sertoli cells of the testis. The unique expression pattern of ACE2 determines its essential role in the regulation of cardiovascular and kidney functions, as well as fertility. ACE2 protein is localized mainly in the extracellular space with its carboxy-terminal end attached to the membrane via its transmembrane domain. Active ACE2 enzyme is secreted by cleavage at the amino terminus. Research studies have shown that ACE2 expression is elevated in human failing heart. ACE2 has also been identified as the receptor for SARS and SARS-CoV-2 coronaviruses.

For Research Use Only