

## Recombinant SULT2B1 Monoclonal Antibody

catalog number: **AN300117P**

**Note:** Centrifuge before opening to ensure complete recovery of vial contents.

### Description

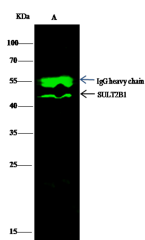
<b>Reactivity</b>	Human
<b>Immunogen</b>	Recombinant Human SULT2B1 Protein
<b>Host</b>	Rabbit
<b>Isotype</b>	IgG
<b>Clone</b>	9D3
<b>Purification</b>	Protein A
<b>Buffer</b>	0.2 µm filtered solution in PBS

### Applications

### Recommended Dilution

<b>WB</b>	1:500-1:1000
<b>IP</b>	0.2-1 µL/mg of lysate

### Data



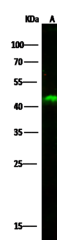
Immunoprecipitation analysis using 0.5 µL anti-SULT2B1 Monoclonal Antibody and 15 µl of 50 % Protein G agarose.

Western blot was performed from the immunoprecipitate using SULT2B1 Monoclonal Antibody at a dilution of 1:500.

Lane A: 0.5 mg MCF-7 Whole Cell Lysate

**Observed-MW: 41 kDa**

**Calculated-MW: 41 kDa**



Western Blot with SULT2B1 Monoclonal Antibody at dilution of 1:500. Lane A: MCF7 Whole Cell Lysate, Lysates/proteins at 30 µg per lane.

**Observed-MW: 41 kDa**

**Calculated-MW: 41 kDa**

### Preparation & Storage

<b>Storage</b>	This antibody can be stored at 2°C-8°C for one month without detectable loss of activity. Antibody products are stable for twelve months from date of receipt when stored at -20°C to -80°C. Preservative-Free. Avoid repeated freeze-thaw cycles.
<b>Shipping</b>	Ice bag

### Background

Sulfotransferase enzymes catalyze the sulfate conjugation of many hormones, neurotransmitters, drugs, and xenobiotic compounds. These cytosolic enzymes are different in their tissue distributions and substrate specificities. The gene structure (number and length of exons) is similar among family members. This gene sulfates dehydroepiandrosterone but not 1-nitrophenol, a typical substrate for the phenol and estrogen sulfotransferase subfamilies. Two alternatively spliced variants that encode different isoforms have been described.

### For Research Use Only