

Recombinant Phospho-Src (Tyr530) Monoclonal Antibody

catalog number: **AN300386L**

Note: Centrifuge before opening to ensure complete recovery of vial contents.

Description

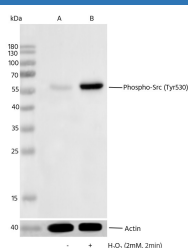
Reactivity	Human
Immunogen	A synthetic peptide corresponding to the residues around
Host	Rabbit
Isotype	IgG
Clone	11G10
Purification	Protein A
Buffer	10 mM sodium HEPES, 150 mM NaCl, 100 µg/mL protein protectant, 50% glycerol, pH 7.5

Applications

Recommended Dilution

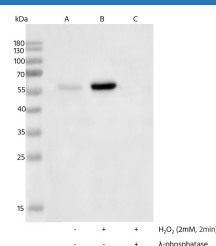
WB 1:1000-1:10000

Data



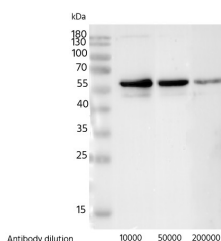
Western blot analysis of extracts from serum-starved Jurkat, untreated (line A) or treated with H₂O₂ (2mM, 2min; +) (line B), using Phospho-Src (Tyr530) rabbit monoclonal Antibody at 1:2000 dilution. (upper) or Anti-Actin Antibody, Chimeric Rabbit Monoclonal at 1:50000 dilution (lower).

Observed-MW:60 kDa
Calculated-MW:60 kDa



Western blot analysis of extracts from serum-starved Jurkat, untreated (line A); treated with H₂O₂ (2mM, 2min; +) (line B); treated with H₂O₂ and λ-phosphatase (line C) using Phospho-Src (Tyr530) rabbit monoclonal Antibody at 1:2000 dilution.

Observed-MW:60 kDa
Calculated-MW:60 kDa



Western blot analysis of extracts from serum-starved Jurkat treated with H₂O₂ (2mM, 2min), using Phospho-Src (Tyr530) rabbit monoclonal Antibody at 1:10000, 1:50000, 1:200000 dilution.

Observed-MW:60 kDa
Calculated-MW:60 kDa

Preparation & Storage

Storage

This antibody can be stored at 2°C-8°C for one month without detectable loss of activity. Antibody products are stable for twelve months from date of receipt when stored at -20°C to -80°C. Preservative-Free. Avoid repeated freeze-thaw cycles.

For Research Use Only

Shipping

Ice bag

Background

This gene is highly similar to the v-src gene of Rous sarcoma virus. This proto-oncogene may play a role in the regulation of embryonic development and cell growth. The protein encoded by this gene is a tyrosine-protein kinase whose activity can be inhibited by phosphorylation by c-SRC kinase. Mutations in this gene could be involved in the malignant progression of colon cancer. Two transcript variants encoding the same protein have been found for this gene.

For Research Use Only

Toll-free: 1-888-852-8623

Web: www.elabscience.com

Tel: 1-832-243-6086

Email: techsupport@elabscience.com

Fax: 1-832-243-6017

Rev. V1.0