

## Elab Fluor® Violet 450 Anti-Human CD62L Antibody[DREG.55]

Catalog Number: GFH00477Q

**Note:** Centrifuge before opening to ensure complete recovery of vial contents.

### Description

Reactivity	Human
Host	Mouse
Isotype	Mouse IgG1, κ
Clone No.	DREG.55
Isotype Control	Elab Fluor® Violet 450 Mouse IgG1, κ Isotype Control[MOPC-21] [Product GFH09792Q]
Conjugation	Elab Fluor® Violet 450
Conjugation Information	Elab Fluor® Violet 450 is designed to be excited by the violet laser (405 nm) and detected using an optical filter centered near 450 nm (e.g., a 450/45 nm bandpass filter).
Storage Buffer	Phosphate buffered solution, pH 7.2, containing 0.09% sodium azide.

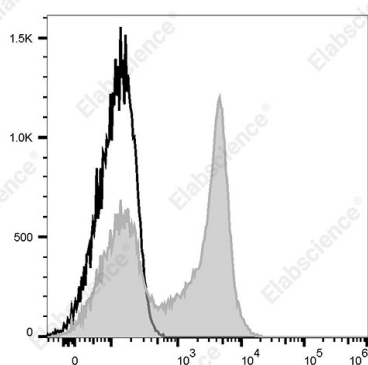
### Applications

### Recommended usage

#### FCM

Each lot of this antibody is quality control tested by flow cytometric analysis. **The amount of the reagent is suggested to be used 5 μL of antibody per test (million cells in 100 μL staining volume or per 100 μL of whole blood).** Please check your vial before the experiment. Since applications vary, the appropriate dilutions must be determined for individual use.

### Data



Staining of normal human peripheral blood cells with Elab

Fluor® Violet 450 Anti-Human CD62L Antibody[DREG.55]

(filled gray histogram) or Elab Fluor® Violet 450 Mouse IgG1, κ Isotype Control (empty black histogram). Cells in the lymphocytes gate were used for analysis.

### Preparation & Storage

Storage	Keep as concentrated solution. This product can be stored at 2-8°C for 12 months. Please protected from prolonged exposure to light and do not freeze.
Shipping	Ice bag

### Antigen Information

Alternate Names	L-selectin; Sell; CD62 antigen-like family member L; LAM-1; LECAM1; Lymph node homing receptor; Ly-22; CD62L; Lnh; Ly22; CD62L 抗体; CD62L 流式抗体; 人CD62L; 人CD62L 抗体; 人CD62L 流式抗体; GFH00477
-----------------	---

### For Research Use Only

**Uniprot ID**

P14151

**Gene ID**

6402

**Background**

CD62L is a 74-95 kD single chain type I glycoprotein referred to as L-selectin or LECA M-1. It is expressed on most peripheral blood B cells, subsets of T and NK cells, monocytes, granulocytes, and certain hematopoietic malignant cells. CD62L binds to carbohydrates present on certain glycoforms of CD34, glycamin-1, and MAdCAM-1 and with a low affinity to anionic oligosaccharide sequences related to sialylated Lewis X (sLex, CD15s) through its C-type lectin domain. CD62L is important for the homing of naïve lymphocytes to high endothelial venules in peripheral lymph nodes and Peyer's patches. It also plays a role in leukocyte rolling on activated endothelial cells.