

SLC6A1 Polyclonal Antibody

catalog number: **E-AB-66423**

Note: Centrifuge before opening to ensure complete recovery of vial contents.

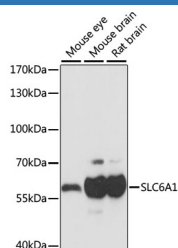
Description

Reactivity	Human;Mouse;Rat
Immunogen	A synthetic peptide of human SLC6A1
Host	Rabbit
Isotype	IgG
Purification	Affinity purification
Buffer	Phosphate buffered solution, pH 7.4, containing 0.05% stabilizer and 50% glycerol.

Applications Recommended Dilution

WB	1:500-1:2000
-----------	--------------

Data



Western blot analysis of extracts of various cell lines using SLC6A1 Polyclonal Antibody at dilution of 1:1000.

Observed-MW:67 kDa

Calculated-MW:67 kDa

Preparation & Storage

Storage	Store at -20°C Valid for 12 months. Avoid freeze / thaw cycles.
Shipping	The product is shipped with ice pack, upon receipt, store it immediately at the temperature recommended.

Background

The protein encoded by this gene is a gamma-aminobutyric acid (GABA) transporter that localizes to the plasma membrane. The encoded protein removes GABA from the synaptic cleft, restoring it to presynaptic terminals.

For Research Use Only