

## Elab Fluor® 647 Anti-Human CD11a Antibody[38]

Catalog Number: AN00569M

Note: Centrifuge before opening to ensure complete recovery of vial contents.

### Description

|                         |  |
|-------------------------|--|
| Reactivity              | Human  |
| Host                    | Mouse  |
| Isotype                 | Mouse IgG2a, κ   |
| Clone No.               | 38   |
| Isotype Control         | Elab Fluor® 647 Mouse IgG2a, κ Isotype Control[C1.18.4] [Product E-AB-F09802M]   |
| Conjugation             | Elab Fluor® 647  |
| Conjugation Information | Elab Fluor® 647 is designed to be excited by the Red laser (627-640 nm) and detected using an optical filter centered near 670 nm (e.g., a 660/20 nm bandpass filter). |
| Storage Buffer          | Phosphate buffered solution, pH 7.2, containing 0.09% sodium azide and 1% BSA.   |

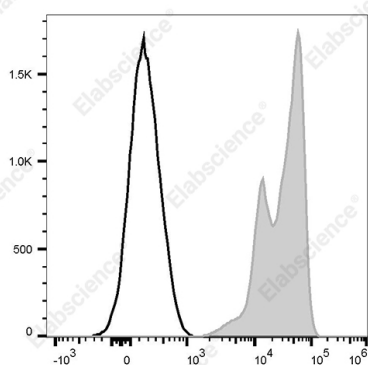
### Applications

### Recommended usage

#### FCM

Each lot of this antibody is quality control tested by flow cytometric analysis. **The amount of the reagent is suggested to be used 5 μL of antibody per test (million cells in 100 μL staining volume or per 100 μL of whole blood).** Please check your vial before the experiment. Since applications vary, the appropriate dilutions must be determined for individual use.

### Data



Staining of normal human peripheral blood cells with Elab Fluor® 647 Anti-Human CD11a Antibody[38] (filled gray histogram) or Elab Fluor® 647 Mouse IgG2a, κ Isotype Control (empty black histogram). Cells in the lymphocytes gate were used for analysis.

### Preparation & Storage

|          |   |
|----------|---|
| Storage  | Keep as concentrated solution.<br>This product can be stored at 2-8°C for 12 months. Please protected from prolonged exposure to light and do not freeze. |
| Shipping | Ice bag   |

### Antigen Information

|                 |   |
|-----------------|---|
| Alternate Names | CD180;Radio-protective 105-kD protein;RP105 |
| Uniprot ID      | Q99467                                      |
| Gene ID         | 3683  |

### For Research Use Only

## Background

CD11a is a 170-180 kD type I transmembrane glycoprotein also known as LFA-1 $\alpha$  chain and integrin  $\alpha$ L subunit. CD11a non-covalently associates with integrin  $\beta$ 2 (CD18) to form LFA-1. It is expressed on all leukocytes, including B and T lymphocytes, monocytes, macrophages, neutrophils, basophils and eosinophils. It is absent on non-hematopoietic tissues and platelets. CD11a plays a central role in leukocyte cell-cell interactions and is important in lymphocyte costimulation. CD11a/CD18 binds to ICAM-1 (CD54), ICAM-2 (CD102), and ICAM-3 (CD50).