

## Recombinant LRP1 Monoclonal Antibody

catalog number: **E-AB-81579**

**Note:** Centrifuge before opening to ensure complete recovery of vial contents.

### Description

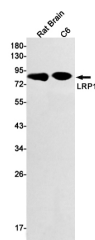
<b>Reactivity</b>	Human;Mouse;Rat
<b>Immunogen</b>	A synthetic peptide of human LRP1
<b>Host</b>	Rabbit
<b>Isotype</b>	IgG
<b>Clone</b>	R09-4E8
<b>Purification</b>	Affinity Purified
<b>Buffer</b>	50mM Tris-Glycine(pH 7.4), 0.15M NaCl, 40% Glycerol, 0.05% stabilizer and 0.05% protective protein.

### Applications

### Recommended Dilution

<b>WB</b>	1:1000-1:2000
<b>IHC</b>	1:20-1:100

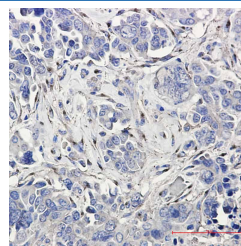
### Data



Western blot detection of LRP1 in Rat Brain, C6 cell lysates using LRP1 Rabbit mAb (1:1000 diluted). Predicted band size: 85kDa. Observed band size: 85kDa.

**Observed-MW:85 kDa**

**Calculated-MW:85 kDa**



Immunohistochemistry of LRP1 in paraffin-embedded Human Cholangiocarcinoma using LRP1 Rabbit mAb at dilution 1:20

### Preparation & Storage

<b>Storage</b>	Store at -20°C Valid for 12 months. Avoid freeze / thaw cycles.
<b>Shipping</b>	The product is shipped with ice pack, upon receipt, store it immediately at the temperature recommended.

### Background

This gene encodes a member of the low-density lipoprotein receptor family of proteins. The encoded preproprotein is proteolytically processed by furin to generate 515 kDa and 85 kDa subunits that form the mature receptor (PMID: 8546712). This receptor is involved in several cellular processes, including intracellular signaling, lipid homeostasis, and clearance of apoptotic cells. In addition, the encoded protein is necessary for the alpha 2-macroglobulin-mediated clearance of secreted amyloid precursor protein and beta-amyloid, the main component of amyloid plaques found in Alzheimer patients. Expression of this gene decreases with age and has been found to be lower than controls in brain tissue from Alzheimer's disease patients.

### For Research Use Only