

## Recombinant Cynomolgus PD-L2/B7-DC/CD273 Protein (His Tag)

**Catalog Number:** PKSQ050026

**Note:** Centrifuge before opening to ensure complete recovery of vial contents.

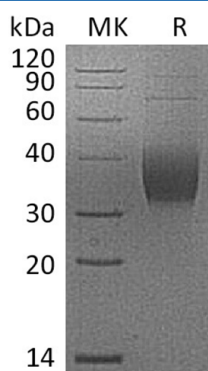
### Description

<b>Species</b>	Cynomolgus macaques
<b>Source</b>	HEK293 Cells-derived Cynomolgus macaques PD-L2/B7-DC/CD273 protein Leu20-Pro219, with an C-terminal His
<b>Calculated MW</b>	23.4 kDa
<b>Observed MW</b>	30-40 kDa
<b>Accession</b>	A4GW30
<b>Bio-activity</b>	Not validated for activity

### Properties

<b>Purity</b>	> 95 % as determined by reducing SDS-PAGE.
<b>Endotoxin</b>	< 1.0 EU per µg of the protein as determined by the LAL method.
<b>Storage</b>	Generally, lyophilized proteins are stable for up to 12 months when stored at -20 to -80 °C. Reconstituted protein solution can be stored at 4-8°C for 2-7 days. Aliquots of reconstituted samples are stable at < -20°C for 3 months.
<b>Shipping</b>	This product is provided as lyophilized powder which is shipped with ice packs.
<b>Formulation</b>	Lyophilized from a 0.2 µm filtered solution of PBS, pH7.4. Normally 5% - 8% trehalose, mannitol and 0.01% Tween 80 are added as protectants before lyophilization.
<b>Reconstitution</b>	Please refer to the specific buffer information in the printed manual. Please refer to the printed manual for detailed information.

### Data



> 95 % as determined by reducing SDS-PAGE.

### Background

Programmed Cell Death 1 Ligand 2 (PDCD1LG2) is a member of the BTN/MOG family. PDCD1LG2 contains one Ig-like C 2-type domain and one Ig-like V-type domain. PDCD1LG2 is highly expressed in the heart, placenta, pancreas, lung and liver; it is weakly expressed in the spleen, lymph nodes, and thymus. PDCD1LG2 is involved in the costimulatory signal, essential for T-cell proliferation and IFNγ production in a PDCD1-independent manner. PDCD1LG2 interaction with PDCD1 inhibits T-cell proliferation by blocking cell cycle progression and cytokine production.

### For Research Use Only