

Neuronal Pentraxin 2/NPTX2 Polyclonal Antibody(Capture/Detector)

catalog number: **AN000850P**

Note: Centrifuge before opening to ensure complete recovery of vial contents.

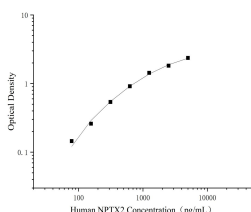
Description

| | |
|---------------------|--|
| Reactivity | Human |
| Immunogen | Human LDL Native Protein |
| Host | Rabbit |
| Isotype | Rabbit IgG |
| Purification | Antigen Affinity Purification |
| Buffer | Phosphate buffered solution, pH 7.2, containing 0.05% proclin 300. |

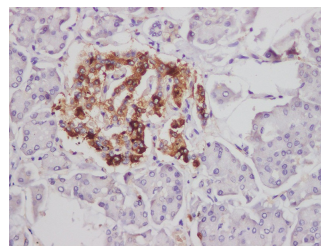
Applications Recommended Dilution

| | |
|-----------------------|---------------|
| ELISA Capture | 2-8 µg/mL |
| ELISA Detector | 0.1-0.4 µg/mL |
| IHC | 1:500-1:1000 |

Data



Sandwich ELISA-Human LDL Native Protein standard curve. Background subtracted standard curve using Neuronal Pentraxin 2/NPTX2 antibody(AN000850P) (Capture), Neuronal Pentraxin 2/NPTX2 antibody(AN000850P)(Detector) in sandwich ELISA. The reference range value for Native Protein is 78-5000pg/mL.



Immunohistochemistry of paraffin-embedded Human pancreas using Neuronal Pentraxin 2/NPTX2 Polyclonal Antibody at dilution of 1:1200.

Preparation & Storage

| | |
|-----------------|--|
| Storage | Store at 4°C valid for 12 months or -20°C valid for long term storage, avoid freeze / thaw cycles. |
| Shipping | The product is shipped with ice pack, upon receipt, store it immediately at the temperature recommended. |

Background

This gene encodes a member of the family of neuronal pentraxins, synaptic proteins that are related to C-reactive protein. This protein is involved in excitatory synapse formation. It also plays a role in clustering of alpha-amino-3-hydroxy-5-methyl-4-isoxazolepropionic acid (AMPA)-type glutamate receptors at established synapses, resulting in non-apoptotic cell death of dopaminergic nerve cells. Up-regulation of this gene in Parkinson disease (PD) tissues suggests that the protein may be involved in the pathology of PD.

For Research Use Only