

## MTCH2 Polyclonal Antibody

**catalog number: E-AB-15217**

**Note:** Centrifuge before opening to ensure complete recovery of vial contents.

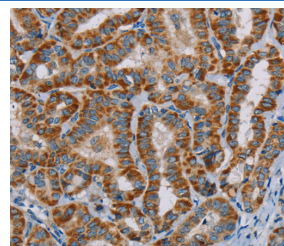
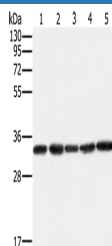
### Description

<b>Reactivity</b>	Human;Mouse
<b>Immunogen</b>	Recombinant protein of human MTCH2
<b>Host</b>	Rabbit
<b>Isotype</b>	IgG
<b>Purification</b>	Affinity purification
<b>Buffer</b>	Phosphate buffered solution, pH 7.4, containing 0.05% stabilizer and 50% glycerol.

### Applications

Applications	Recommended Dilution
<b>WB</b>	1:1000-1:5000
<b>IHC</b>	1:50-1:200

### Data



Western Blot analysis of Human testis tissue and K562 cell, PC3 cell and Human liver cancer tissue, hela cell using MTCH2 Polyclonal Antibody at dilution of 1:400

Immunohistochemistry of paraffin-embedded Human thyroid cancer using MTCH2 Polyclonal Antibody at dilution of 1:45

**Calculated-MW:33 kDa**

### Preparation & Storage

<b>Storage</b>	Store at -20°C Valid for 12 months. Avoid freeze / thaw cycles.
<b>Shipping</b>	The product is shipped with ice pack, upon receipt, store it immediately at the temperature recommended.

### Background

Mitochondrial carrier homolog 2 also known as MTCH2 is a protein which in humans is encoded by the MTCH2 gene. MTCH2 (mitochondrial carrier homolog 2), is a 303 amino acid multi-pass mitochondrial membrane protein that contains two solar repeats and functions to induce mitochondrial depolarization. The substrate transported is not yet known. Induces mitochondrial depolarization.

### For Research Use Only