

## CD31 Polyclonal Antibody

catalog number: E-AB-70020

**Note:** Centrifuge before opening to ensure complete recovery of vial contents.

### Description

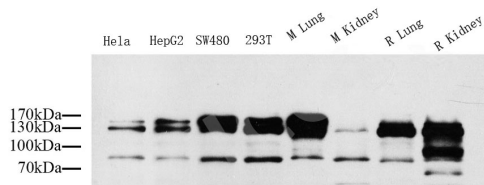
<b>Reactivity</b>	Human;Mouse;Rat
<b>Immunogen</b>	KLH conjugated Synthetic peptide corresponding to Mouse CD31
<b>Host</b>	Rabbit
<b>Isotype</b>	IgG
<b>Purification</b>	Affinity purification
<b>Conjugation</b>	Unconjugated
<b>Buffer</b>	Phosphate buffered solution, pH 7.4, containing 0.05% stabilizer, 1% protein protectant and 50% glycerol.

### Applications

### Recommended Dilution

<b>WB</b>	1:500-1:2000
-----------	--------------

### Data



Western Blot analysis of various samples using CD31 Polyclonal Antibody at dilution of 1:1000.

**Observed-MW:90 /130 kDa**

**Calculated-MW:130 kDa**

### Preparation & Storage

<b>Storage</b>	Store at -20°C Valid for 12 months. Avoid freeze / thaw cycles.
<b>Shipping</b>	The product is shipped with ice pack,upon receipt,store it immediately at the temperature recommended.

### Background

Platelet endothelial cell adhesion molecule-1 (PECAM-1,CD31) is a member of the immunoglobulin gene superfamily of cell adhesion molecules. It is highly expressed on the surface of the endothelium,making up a large portion of its intracellular junctions. PECAM-1 is also present on the surface of hematopoietic cells and immune cells including platelets,monocytes,neutrophils,natural killer cells,megakaryocytes and some types of T-cell . As well as its role in cell-cell adhesion,PECAM-1 functions as a signaling receptor,and is involved in important physiological events such as nitric oxide production,regulation of T-cell immunity and tolerance,leukocyte transendothelial migration and inflammation and angiogenesis .

### For Research Use Only