

## Recombinant Human IL-1R8/IL1RAPL1 Protein (Fc Tag)

**Catalog Number:** PKSH031796

**Note:** Centrifuge before opening to ensure complete recovery of vial contents.

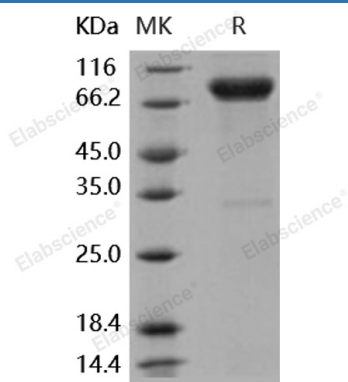
### Description

<b>Species</b>	Human
<b>Source</b>	HEK293 Cells-derived Human IL-1R8/IL1RAPL1 protein Met 1-Leu 354, with an C-terminal hFc
<b>Calculated MW</b>	65.0 kDa
<b>Observed MW</b>	80-85 kDa
<b>Accession</b>	NP_055086.1
<b>Bio-activity</b>	Measured by its ability to bind biotinylated human IL1 $\alpha$ in functional ELISA.

### Properties

<b>Purity</b>	> 95 % as determined by reducing SDS-PAGE.
<b>Endotoxin</b>	< 1.0 EU per $\mu$ g of the protein as determined by the LAL method.
<b>Storage</b>	Generally, lyophilized proteins are stable for up to 12 months when stored at -20 to -80 °C. Reconstituted protein solution can be stored at 4-8°C for 2-7 days. Aliquots of reconstituted samples are stable at < -20°C for 3 months.
<b>Shipping</b>	This product is provided as lyophilized powder which is shipped with ice packs.
<b>Formulation</b>	Lyophilized from sterile PBS, pH 7.4 Normally 5% - 8% trehalose, mannitol and 0.01% Tween 80 are added as protectants before lyophilization. Please refer to the specific buffer information in the printed manual.
<b>Reconstitution</b>	Please refer to the printed manual for detailed information.

### Data



> 95 % as determined by reducing SDS-PAGE.

### Background

### For Research Use Only

Toll-free: 1-888-852-8623  
Web: [www.elabscience.com](http://www.elabscience.com)

Tel: 1-832-243-6086  
Email: [techsupport@elabscience.com](mailto:techsupport@elabscience.com)

Fax: 1-832-243-6017

Interleukin-1 receptor accessory protein-like 1 (IL1RAPL1) is a member of interleukin-1 receptor family. The protein structurally comprises three extracellular immunoglobulin domains; which presumably mediate binding of an as yet unidentified ligand; a transmembrane region; and an intracellular domain; which is likely to enable signalling via the NFkB pathway. The means of signalling is almost certain to be identical to that used by the IL1R family and the more distally related Toll protein. L1RAPL1 protein physically interacts via its 150 aa C-terminal domain with neuronal calcium sensor-1 (NCS-1); a protein widely expressed in neurons and the related chromaffin and PC12 cells. IL1RAPL1 is an integral membrane protein responsible for a nonsyndromic form of mental retardation (MR). It is suggested to affect human cognitive ability to some extent; especially the memory and concentration capability.