

LETM2 Polyclonal Antibody

catalog number: E-AB-90704

Note: Centrifuge before opening to ensure complete recovery of vial contents.

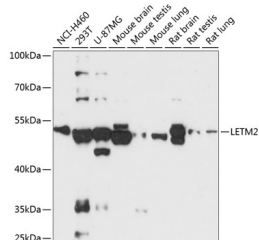
Description

Reactivity	Human;Mouse;Rat
Immunogen	Recombinant fusion protein of human LETM2
Host	Rabbit
Isotype	IgG
Purification	Affinity purification
Buffer	Phosphate buffered solution, pH 7.4, containing 0.05% stabilizer and 50% glycerol.

Applications

WB	1:500-1:2000
-----------	--------------

Data



Western blot analysis of extracts of various cell lines using
LETM2 Polyclonal Antibody at 1:3000 dilution.

Observed-MV:54 kDa

Calculated-MV:30 kDa/44 kDa/50 kDa/55 kDa

Preparation & Storage

Storage	Store at -20°C Valid for 12 months. Avoid freeze / thaw cycles.
Shipping	The product is shipped with ice pack,upon receipt,store it immediately at the temperature recommended.

Background

Predicted to enable ribosome binding activity. Predicted to be involved in cellular metal ion homeostasis. Predicted to be located in mitochondrial inner membrane. Predicted to be integral component of membrane.

For Research Use Only