

NAT8B Polyclonal Antibody

catalog number: E-AB-61582

Note: Centrifuge before opening to ensure complete recovery of vial contents.

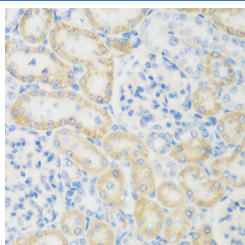
Description

Reactivity	Human;Mouse;Rat
Immunogen	Recombinant fusion protein of human NAT8B (NP_057431.2).
Host	Rabbit
Isotype	IgG
Purification	Affinity purification
Buffer	Phosphate buffered solution, pH 7.4, containing 0.05% stabilizer and 50% glycerol.

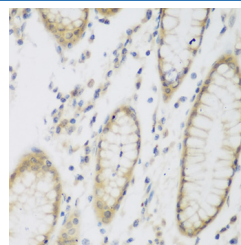
Applications

Applications	Recommended Dilution
IHC	1:50-1:200

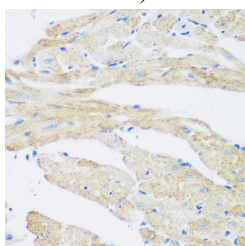
Data



Immunohistochemistry of paraffin-embedded Rat kidney using NAT8B Polyclonal Antibody at dilution of 1:200 (40x lens).



Immunohistochemistry of paraffin-embedded Human stomach using NAT8B Polyclonal Antibody at dilution of 1:200 (40x lens).



Immunohistochemistry of paraffin-embedded Mouse heart using NAT8B Polyclonal Antibody at dilution of 1:200 (40x lens).

Preparation & Storage

Storage	Store at -20°C Valid for 12 months. Avoid freeze / thaw cycles.
Shipping	The product is shipped with ice pack, upon receipt, store it immediately at the temperature recommended.

Background

The protein encoded by this gene is highly similar to the N-acetyltransferase 8 (NAT8) gene product, which is a kidney and liver protein with homology to bacterial acetyltransferases involved in drug resistance. This gene is localized on chromosome 2 in the vicinity of the NAT8 gene and may represent a pseudogene of NAT8. This gene contains two polymorphic nonsense mutations that disrupt the active site of the protein. The full-length product of this gene contains a complete acetyltransferase domain and is identical in length to NAT8.

For Research Use Only