

Recombinant Phospho-VEGF Receptor 2 (Tyr1175) Monoclonal Antibody

catalog number: **AN300385L**

Note: Centrifuge before opening to ensure complete recovery of vial contents.

Description

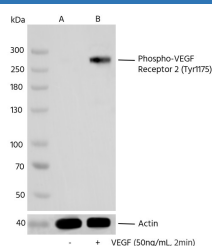
Reactivity	Human
Immunogen	A synthetic peptide corresponding to the residues around Tyr1175 of Human Phospho-VEGF Receptor 2
Host	Rabbit
Isotype	IgG
Clone	11G9
Purification	Protein A
Buffer	10 mM sodium HEPES, 150 mM NaCl, 100 µg/mL protein protectant, 50% glycerol, pH 7.5

Applications

Recommended Dilution

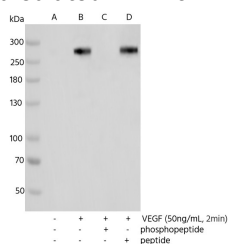
WB 1:1000-1:10000

Data



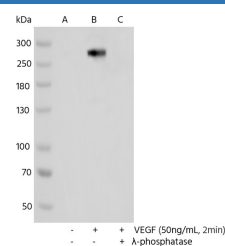
Western blot analysis of extracts from serum-starved HUVEC, untreated (line A) or treated with VEGF (50ng/mL, 2min; +) (line B), using Phospho-VEGF Receptor 2 (Tyr1175) rabbit monoclonal Antibody at 1:10000 dilution. (upper) or Anti-Actin Antibody, Chimeric Rabbit Monoclonal at 1:50000 dilution (lower).

Observed-MW:280 kDa
Calculated-MW:152 kDa



Western blot analysis of extracts from serum-starved HUVEC, untreated (line A); treated with VEGF (50ng/mL, 2min), without peptide (line B) or antigen-specific phosphopeptide (line C) or antigen-specific peptide (line D) using Phospho-VEGF Receptor 2 (Tyr1175) rabbit monoclonal Antibody at 1:10000 dilution.

Observed-MW:280 kDa
Calculated-MW:152 kDa



Western blot analysis of extracts from serum-starved HUVEC, untreated (line A); treated with VEGF (50ng/mL, 2min; +) (line B); treated with VEGF and λ -phosphatase (line C) using Phospho-VEGF Receptor 2 (Tyr1175) rabbit monoclonal Antibody at 1:10000 dilution.

Observed-MW:280 kDa
Calculated-MW:152 kDa

For Research Use Only

Preparation & Storage

Storage

This antibody can be stored at 2°C-8°C for one month without detectable loss of activity. Antibody products are stable for twelve months from date of receipt when stored at -20°C to -80°C. Preservative-Free. Avoid repeated freeze-thaw cycles.

Shipping

Ice bag

Background

Vascular endothelial growth factor (VEGF) is a major growth factor for endothelial cells. This gene encodes one of the two receptors of the VEGF. This receptor, known as kinase insert domain receptor, is a type III receptor tyrosine kinase. It functions as the main mediator of VEGF-induced endothelial proliferation, survival, migration, tubular morphogenesis and sprouting. The signalling and trafficking of this receptor are regulated by multiple factors, including Rab GTPase, P2Y purine nucleotide receptor, integrin $\alpha V\beta 3$, T-cell protein tyrosine phosphatase, et c.. Mutations of this gene are implicated in infantile capillary hemangiomas.

For Research Use Only

Toll-free: 1-888-852-8623

Web: www.elabscience.com

Tel: 1-832-243-6086

Email: techsupport@elabscience.com

Fax: 1-832-243-6017

Rev. V1.0