

## Elab Fluor® 700 Anti-Mouse Ly6A/E(Sca-1) Antibody[D7]

**Catalog Number:** E-AB-F1191UM1

**Note:** Centrifuge before opening to ensure complete recovery of vial contents.

### Description

<b>Reactivity</b>	Mouse
<b>Host</b>	Rat
<b>Isotype</b>	Rat IgG2a, $\kappa$
<b>Clone No.</b>	D7
<b>Isotype Control</b>	Elab Fluor® 700 Rat IgG2a, $\kappa$ Isotype Control[2A3] [Product E-AB-F09833M1]
<b>Conjugation</b>	Elab Fluor® 700
<b>Conjugation Information</b>	Elab Fluor® 700 is designed to be excited by the Red laser (627-640 nm) and detected using an optical filter centered near 719 nm (e.g., a 725/40 nm bandpass filter).
<b>Storage Buffer</b>	Phosphate buffered solution, pH 7.2, containing 0.09% stabilizer.

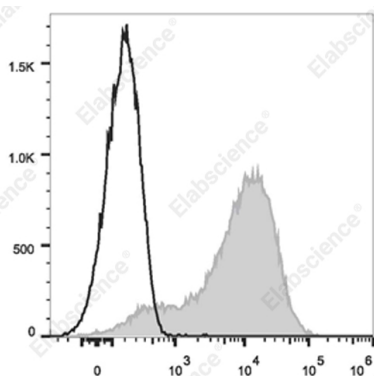
### Applications

### Recommended usage

#### FCM

Each lot of this antibody is quality control tested by flow cytometric analysis. Please check your vial before the experiment. Since applications vary, the appropriate dilutions must be determined for individual use. We suggest each investigator should titrate the reagent to obtain optimal results [The recommended concentration is 0.1-1  $\mu\text{g}/10^6$  cells in 100  $\mu\text{L}$  volume].

### Data



Staining of C57BL/6 murine splenocytes cells with Elab Fluor

® 700 Anti-Mouse Ly6A/E(Sca-1) Antibody[D7](filled gray histogram) or Elab Fluor® 700 Rat IgG2a,  $\kappa$  Isotype Control (empty black histogram). Total viable cells were used for analysis.

### Preparation & Storage

<b>Storage</b>	Keep as concentrated solution. This product can be stored at 2-8°C for 12 months. Please protected from prolonged exposure to light and do not freeze.
<b>Shipping</b>	Ice bag

### Antigen Information

<b>Alternate Names</b>	Ly-6A.2/Ly-6E.1;Ly6;Ly6a;SCA-1;TAP
<b>Uniprot ID</b>	P05533
<b>Gene ID</b>	110454

### For Research Use Only

## Background

Ly-6A/E, also known as Sca-1, is an 18 kD member of the Ly-6 multigene family. Ly6A/E is a glycosylphosphatidylinositol (GPI)-linked protein expressed on hematopoietic stem cells. In mice expressing the Ly-6.2 haplotype (e.g., AKR, C57BL, C57BR, DBA/2, SJL, SWR, and 129), Ly-6A/E is also expressed on peripheral B lymphocytes and thymic and peripheral T lymphocytes. Strains expressing the Ly-6.1 haplotype (e.g., BALB/c, CBA, C3H/He, DBA/1, and NZB) have low Ly-6A/E expression on resting peripheral lymphocytes. The expression of Ly-6A/E on lymphocytes is upregulated upon activation from both Ly6.1 and Ly6.2 haplotype mice. Ly-6A/E is thought to be involved in the regulation of both T and B cell responses.