

## Recombinant Mouse CD3d/CD3 delta Protein (Fc Tag)

**Catalog Number: PKSM040705**

**Note:** *Centrifuge before opening to ensure complete recovery of vial contents.*

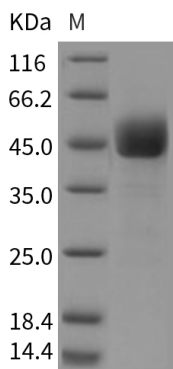
### Description

<b>Species</b>	Mouse
<b>Source</b>	HEK293 Cells-derived Mouse CD3d/CD3 delta protein Met1-Ala105, with an C-terminal hFc
<b>Calculated MW</b>	36.4 kDa
<b>Observed MW</b>	44-48 kDa
<b>Accession</b>	P04235
<b>Bio-activity</b>	Not validated for activity

### Properties

<b>Purity</b>	> 95 % as determined by reducing SDS-PAGE.
<b>Endotoxin</b>	< 1.0 EU per µg of the protein as determined by the LAL method.
<b>Storage</b>	Generally, lyophilized proteins are stable for up to 12 months when stored at -20 to -80°C. Reconstituted protein solution can be stored at 4-8°C for 2-7 days. Aliquots of reconstituted samples are stable at < -20°C for 3 months.
<b>Shipping</b>	This product is provided as lyophilized powder which is shipped with ice packs.
<b>Formulation</b>	Lyophilized from sterile PBS, pH 7.4 Normally 5% - 8% trehalose, mannitol and 0.01% Tween 80 are added as protectants before lyophilization. Please refer to the specific buffer information in the printed manual.
<b>Reconstitution</b>	Please refer to the printed manual for detailed information.

### Data



> 95 % as determined by reducing SDS-PAGE.

### Background

#### For Research Use Only

Toll-free: 1-888-852-8623  
Web: [www.elabscience.com](http://www.elabscience.com)

Tel: 1-832-243-6086  
Email: [techsupport@elabscience.com](mailto:techsupport@elabscience.com)

Fax: 1-832-243-6017

T-cell surface glycoprotein CD3 delta chain, also known as CD3D, is a single-pass type I membrane protein. CD3D, together with CD3-gamma, CD3-epsilon and CD3-zeta, and the T-cell receptor alpha/beta and gamma/delta heterodimers, forms the T cell receptor-CD3 complex. The majority of T cell receptor (TCR) complexes in mice and humans consist of a heterodimer of polymorphic TCRalpha and beta chains along with invariant CD3gamma, delta, epsilon, and zeta chains. CD3 chains are present as CD3gammaepsilon, deltaepsilon, and zetazeta dimers in the receptor complex and play critical roles in the antigen receptor assembly, transport to the cell surface, and the receptor-mediated signal transduction. T cell receptor-CD3 complex plays an important role in coupling antigen recognition to several intracellular signal-transduction pathways. This complex is critical for T-cell development and function, and represents one of the most complex transmembrane receptors. The T cell receptor-CD3 complex is unique in having ten cytoplasmic immunoreceptor tyrosine-based activation motifs (ITAMs). CD3D contains 1 ITAM domain and has been shown to interact with CD8A. Defects in CD3D cause severe combined immunodeficiency autosomal recessive T-cell-negative/B-cell-positive/NK-cell-positive (T-/B+/NK+ SCID) which is a genetically and clinically heterogeneous group of rare congenital disorders characterized by impairment of both humoral and cell-mediated immunity, leukopenia, and low or absent antibody levels.

## For Research Use Only

Toll-free: 1-888-852-8623  
Web: [www.elabscience.com](http://www.elabscience.com)

Tel: 1-832-243-6086  
Email: [techsupport@elabscience.com](mailto:techsupport@elabscience.com)

Fax: 1-832-243-6017