

## Recombinant Tryptophan Hydroxylase 1/TPH1 Monoclonal Antibody

catalog number: **AN300408P**

**Note:** Centrifuge before opening to ensure complete recovery of vial contents.

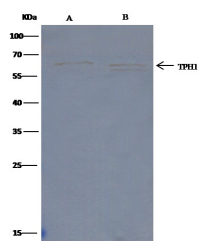
### Description

<b>Reactivity</b>	Human
<b>Immunogen</b>	Recombinant Human Tryptophan Hydroxylase 1/TPH1 Protein
<b>Host</b>	Rabbit
<b>Isotype</b>	IgG
<b>Clone</b>	5D6
<b>Purification</b>	Protein A
<b>Buffer</b>	0.2 µm filtered solution in PBS

### Applications Recommended Dilution

<b>WB</b>	1:500-1:1000
<b>IP</b>	0.2-1 µL/mg of lysate

### Data



Immunoprecipitation analysis using 0.5 µL anti-TPH1 Monoclonal Antibody and 60 µg of Immunomagnetic beads

Protein G. Western blot was performed from the immunoprecipitate using TPH1 Monoclonal Antibody at a dilution of 1:500. Lane A: 0.5 mg Jurkat Whole Cell Lysate, Lane B: 0.5 mg THP-1 Whole Cell Lysate

**Observed-MW: 55 kDa**

**Calculated-MW: 55 kDa**



Western Blot with TPH1 Monoclonal Antibody at dilution of 1:500 dilution. Lane A: THP1 Whole Cell Lysate, Lysates/proteins at 30 µg per lane.

**Observed-MW: 55 kDa**

**Calculated-MW: 55 kDa**

### Preparation & Storage

<b>Storage</b>	This antibody can be stored at 2°C-8°C for one month without detectable loss of activity. Antibody products are stable for twelve months from date of receipt when stored at -20°C to -80°C. Preservative-Free. Avoid repeated freeze-thaw cycles.
<b>Shipping</b>	Ice bag

### Background

This gene encodes a member of the aromatic amino acid hydroxylase family. The encoded protein catalyzes the first and rate limiting step in the biosynthesis of serotonin, an important hormone and neurotransmitter. Mutations in this gene have been associated with an elevated risk for a variety of diseases and disorders, including schizophrenia, somatic anxiety, anger-related traits, bipolar disorder, suicidal behavior, addictions, and others.

### For Research Use Only