

## Interleukin-2/IL-2 Monoclonal Antibody

**catalog number: AN200250P**

**Note:** Centrifuge before opening to ensure complete recovery of vial contents.

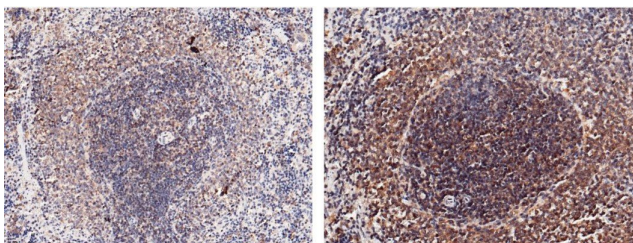
### Description

<b>Reactivity</b>	Rat
<b>Immunogen</b>	Recombinant Rat Interleukin-2/IL-2 protein
<b>Host</b>	Mouse
<b>Isotype</b>	IgG2b
<b>Clone</b>	11B3
<b>Purification</b>	Protein A
<b>Buffer</b>	0.2 µm filtered solution in PBS

### Applications Recommended Dilution

<b>IHC-P</b>	1:50-1:200
--------------	------------

### Data



Immunohistochemistry of paraffin-embedded rat spleen (from 2 donors) using Interleukin-2/IL-2 Monoclonal Antibody at dilution of 1:60.

### Preparation & Storage

<b>Storage</b>	This antibody can be stored at 2°C-8°C for one month without detectable loss of activity. Antibody products are stable for twelve months from date of receipt when stored at -20°C to -80°C. Preservative-Free. Avoid repeated freeze-thaw cycles.
<b>Shipping</b>	Ice bag

### Background

IL-2 (Interleukin 2) is a critical cytokine in T cell biology. It promotes T cell activation and expansion, the development, maintenance and function of regulatory T cells (Treg), and the differentiation of CD8+ T cells into terminal effector cells and memory cells. IL-2 signals through a receptor complex composed of CD25/IL-2 R alpha, IL-2 R beta, and the Common gamma Chain (gamma c). IL-2 R beta is also a component of the IL-15 receptor complex. Gamma c is also a signaling subunit in the receptors for IL-4, -7, -9, -15, and -21.

### For Research Use Only