

Elab Fluor® 700 Anti-Mouse CD326/EpCAM Antibody[G8.8]

Catalog Number: E-AB-F1181UM1

Note: Centrifuge before opening to ensure complete recovery of vial contents.

Description

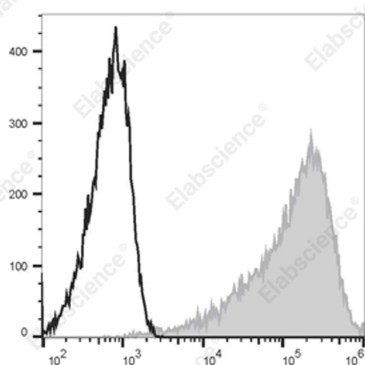
Reactivity	Mouse
Host	Rat
Isotype	Rat IgG2a, κ
Clone No.	G8.8
Isotype Control	Elab Fluor® 700 Rat IgG2a, κ Isotype Control[2A3] [Product E-AB-F09833M1]
Conjugation	Elab Fluor® 700
Conjugation Information	Elab Fluor® 700 is designed to be excited by the Red laser (627-640 nm) and detected using an optical filter centered near 719 nm (e.g., a 725/40 nm bandpass filter).
Storage Buffer	Phosphate buffered solution, pH 7.2, containing 0.09% stabilizer.

Applications

Recommended usage

FCM	Each lot of this antibody is quality control tested by flow cytometric analysis. Please check your vial before the experiment. Since applications vary, the appropriate dilutions must be determined for individual use. We suggest each investigator should titrate the reagent to obtain optimal results [The recommended concentration is 0.1-1 µg/10 ⁶ cells in 100 µL volume].
------------	--

Data



Staining of 4T1 cells with Elab Fluor® 700 Anti-Mouse CD326/EpCAM Antibody[G8.8] (filled gray histogram) or Elab

Fluor® 700 Rat IgG2a, κ Isotype Control (empty black histogram). Total viable cells were used for analysis.

Preparation & Storage

Storage	Keep as concentrated solution. This product can be stored at 2-8°C for 24 months. Please protected from prolonged exposure to light and do not freeze.
Shipping	Ice bag

Antigen Information

Alternate Names	EGP314;Ep-CAM;EpCAM;Megp314;Tacstd1
Uniprot ID	Q99JW5
Gene ID	17075

For Research Use Only

Background

EpCAM (CD326) mediates calcium-independent homophilic cell to cell adhesion. It may also function as a growth factor receptor. It is thought to be involved in maintaining cells in position during proliferation. Expression of EpCAM seems to correlate inversely with the level of E-cadherin (CD324). EpCAM is considered important in tumor biology.