

Recombinant Human CNN1 protein (His Tag)

Catalog Number: PDEH101066



Note: Centrifuge before opening to ensure complete recovery of vial contents.

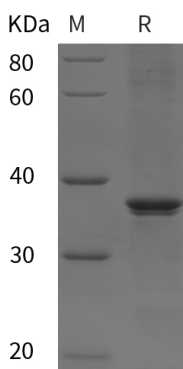
Description

Species	Human
Mol_Mass	32.6 kDa
Accession	P51911
Bio-activity	Not validated for activity

Properties

Purity	> 95% as determined by reducing SDS-PAGE.
Endotoxin	< 10 EU/mg of the protein as determined by the LAL method
Storage	Generally, lyophilized proteins are stable for up to 12 months when stored at -20 to -80 °C. Reconstituted protein solution can be stored at 4-8°C for 2-7 days. Aliquots of reconstituted samples are stable at < -20°C for 3 months.
Shipping	This product is provided as lyophilized powder which is shipped with ice packs.
Formulation	Lyophilized from a 0.2 µm filtered solution in PBS with 5% Trehalose and 5% Mannitol.
Reconstitution	It is recommended that sterile water be added to the vial to prepare a stock solution of 0.5 mg/mL. Concentration is measured by UV-Vis.

Data



> 95 % as determined by reducing SDS-PAGE.

Background

CNN-1 (Calponin 1 [calcium and calmodulin-binding troponin T-like protein], also Calponin basic, CaP and Calponin H1) is a 32-36 kDa cytoplasmic member of the calponin family of proteins. Although reportedly expressed in fibroblasts and endothelial cells, it actually appears to be restricted to smooth muscle and smooth muscle-like cells such as myoepithelium and myofibroblasts in the adult. CNN-1 interacts with F-actin in a phosphorylation-dependent manner. When nonphosphorylated, CNN-1 blocks actomyosin ATPase activity, contributing to the stabilization of actin stress fiber bundles. Thus, CNN-1 expression inhibits cell motility and the formation of podosomes. Human CNN-1 is 297 amino acids (aa) in length. It contains one CH/calponin homology domain (aa 30-127), and three consecutive calponin-like repeats (aa 164-268). The repeats are suggested to mediate actin binding. There are five potential Ser/Thr phosphorylation sites. Full-length human CNN-1 shares 97% aa sequence identity with mouse CNN-1.

For Research Use Only

A Reliable Research Partner in Life Science and Medicine
Tel: 400-999-2100

Email: techsupport@elabscience.cn

Web: www.elabscience.cn

Rev. V1.2