

Recombinant Human Mitochondrial Fission 1 Protein/FIS1 Protein (His Tag)

Catalog Number: PKSH032758

Note: Centrifuge before opening to ensure complete recovery of vial contents.

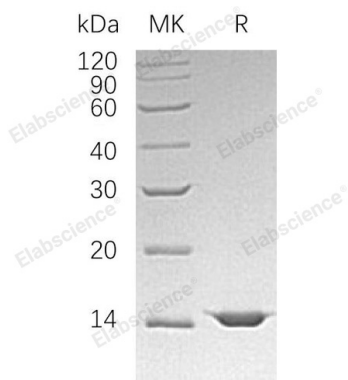
Description

Species	Human
Source	E.coli-derived Human Mitochondrial Fission 1;FIS1 protein Met 1-Gly122, with an C-terminal His
Calculated MW	15.3 kDa
Observed MW	15 kDa
Accession	Q9Y3D6
Bio-activity	Not validated for activity

Properties

Purity	> 95 % as determined by reducing SDS-PAGE.
Endotoxin	< 1.0 EU per µg of the protein as determined by the LAL method.
Storage	Generally, lyophilized proteins are stable for up to 12 months when stored at -20 to -80°C. Reconstituted protein solution can be stored at 4-8°C for 2-7 days. Aliquots of reconstituted samples are stable at < -20°C for 3 months.
Shipping	This product is provided as lyophilized powder which is shipped with ice packs.
Formulation	Lyophilized from a 0.2 µm filtered solution of 20mM Tris-HCl, pH 8.0. Normally 5% - 8% trehalose, mannitol and 0.01% Tween 80 are added as protectants before lyophilization. Please refer to the specific buffer information in the printed manual.
Reconstitution	Please refer to the printed manual for detailed information.

Data



> 95 % as determined by reducing SDS-PAGE.

Background

Mitochondrial Fission 1 Protein (FIS1) is a member of the FIS1 family. FIS1 is a single-pass membrane protein and contains one TPR repeat. FIS1 is part of the mitochondrial complex that promotes mitochondrial fission. FIS1 can induce cytochrome C discharge from the mitochondrion to the cytosol, eventually leading to apoptosis. In addition, FIS1 participates in peroxisomal growth and division. The C-terminus of FIS1 is required for mitochondrial or peroxisomal localization, while the N-terminus is necessary for mitochondrial or peroxisomal fission, localization and regulation of the interaction with DNM1L.

For Research Use Only

Toll-free: 1-888-852-8623
Web: www.elabscience.com

Tel: 1-832-243-6086
Email: techsupport@elabscience.com

Fax: 1-832-243-6017