

## KLK10 Polyclonal Antibody

**catalog number: D-AB-10185L**

**Note:** Centrifuge before opening to ensure complete recovery of vial contents.

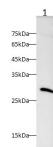
### Description

<b>Reactivity</b>	Human
<b>Immunogen</b>	Recombinant Human KLK10 protein expressed by E.coli
<b>Host</b>	Rabbit
<b>Isotype</b>	IgG
<b>Purification</b>	Antigen Affinity Purification
<b>Buffer</b>	PBS with 0.05% Proclin300, 1% protective protein and 50% glycerol, pH7.4

### Applications

Applications	Recommended Dilution
WB	1:500-1:1000

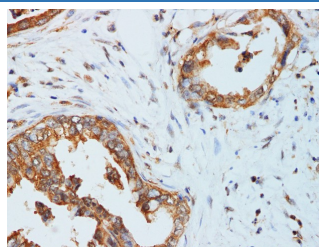
### Data



Western blot with KLK10 Polyclonal antibody at dilution of 1:1000. lane 1: Hep G2 whole cell lysate

**Observed-MW: 30 kDa**

**Calculated-MW: 30 kDa**



Immunohistochemistry of paraffin-embedded Pancreatic cancer using KLK10 Polyclonal Antibody at dilution of 1:200

1:200

### Preparation & Storage

<b>Storage</b>	Store at -20°C Valid for 12 months. Avoid freeze / thaw cycles.
<b>Shipping</b>	The product is shipped with ice pack, upon receipt, store it immediately at the temperature recommended.

### Background

Kallikreins are a subgroup of serine proteases having diverse physiological functions. Growing evidence suggests that many kallikreins are implicated in carcinogenesis and some have potential as novel cancer and other disease biomarkers. This gene is one of the fifteen kallikrein subfamily members located in a cluster on chromosome 19. Its encoded protein is secreted and may play a role in suppression of tumorigenesis in breast and prostate cancers. Alternate splicing of this gene results in multiple transcript variants encoding the same protein.

### For Research Use Only