

Recombinant Human 15-PGDH Protein (His Tag)

Catalog Number: PKSH033377

Note: Centrifuge before opening to ensure complete recovery of vial contents.

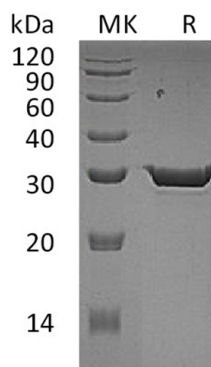
Description

Species	Human
Source	HEK293 Cells-derived Human 15-PGDH protein Met 1-Gln266, with an C-terminal His
Calculated MW	30 kDa
Observed MW	29 kDa
Accession	P15428
Bio-activity	Not validated for activity

Properties

Purity	> 95 % as determined by reducing SDS-PAGE.
Concentration	Subject to label value.
Endotoxin	< 1.0 EU per µg of the protein as determined by the LAL method.
Storage	Store at < -20°C, stable for 6 months. Please minimize freeze-thaw cycles.
Shipping	This product is provided as liquid. It is shipped at frozen temperature with blue ice/gel packs. Upon receipt, store it immediately at < -20°C.
Formulation	Supplied as a 0.2 µm filtered solution of 20mM HEPES, 150mM NaCl, pH 7.4.

Data



> 95 % as determined by reducing SDS-PAGE.

Background

15-hydroxyprostaglandin dehydrogenase [NAD(+)], also known as Prostaglandin dehydrogenase 1, 15-PGDH, HPGD and PGDH1, belongs to the short-chain dehydrogenases/reductases (SDR) family. HPGD localizes to the cytoplasm and can be found in colon epithelium, existing as a homodimer. HPGD catalyzes the NAD-dependent dehydrogenation of lipoxin A4 to form 15-oxo-lipoxin A4. HPGD is down-regulated by cortisol, dexamethasone and betamethasone, up-regulated by TGFβ1. HPGD inhibits in vivo proliferation of colon cancer cells. HPGD is the key enzyme for the inactivation of prostaglandins, and thus regulates processes such as inflammation or proliferation.

For Research Use Only

Toll-free: 1-888-852-8623
Web: www.elabscience.com

Tel: 1-832-243-6086
Email: techsupport@elabscience.com

Fax: 1-832-243-6017

Rev. V3.6