

Recombinant Human CD226/DNAM-1 Protein (Fc Tag)

Catalog Number: PKSH033729

Note: Centrifuge before opening to ensure complete recovery of vial contents.

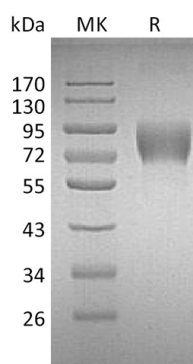
Description

Species	Human
Source	HEK293 Cells-derived Human CD226/DNAM-1 protein Glu19-Asn247, with an C-terminal Fc
Calculated MW	52.8 kDa
Observed MW	72-90 kDa
Accession	Q15762
Bio-activity	Not validated for activity

Properties

Purity	> 95 % as determined by reducing SDS-PAGE.
Endotoxin	< 1.0 EU per µg of the protein as determined by the LAL method.
Storage	Generally, lyophilized proteins are stable for up to 12 months when stored at -20 to -80 °C. Reconstituted protein solution can be stored at 4-8°C for 2-7 days. Aliquots of reconstituted samples are stable at < -20°C for 3 months.
Shipping	This product is provided as lyophilized powder which is shipped with ice packs.
Formulation	Lyophilized from a 0.2 µm filtered solution of PBS, pH 7.4. Normally 5% - 8% trehalose, mannitol and 0.01% Tween 80 are added as protectants before lyophilization. Please refer to the specific buffer information in the printed manual.
Reconstitution	Please refer to the printed manual for detailed information.

Data



> 95 % as determined by reducing SDS-PAGE.

Background

Human DNAX accessory molecule 1 (DNAM-1/CD226) is a 65 kDa type I transmembrane glycoprotein in the immunoglobulin superfamily. Mature human DNAM-1 contains an extracellular domain (ECD) with two Ig-like C2-set domains and a cytoplasmic region that contains motifs for binding PDZ domains and band 4.1 family proteins. DNAM-1 is expressed on multiple lymphoid and myeloid cells and interacts with CD155 and CD112. Ligation of DNAM-1 promotes the activation of NK cells; CD8+ T cells; and mast cells; dendritic cell maturation; megakaryocyte and activated platelet adhesion to vascular endothelial cells; and monocyte extravasation; it inhibits the formation of osteoclasts. Platelet-endothelium interactions mediated by DNAM-1; enable the metastasis of tumor cells to the lung.

For Research Use Only