

Elab Fluor® 647 Anti-Human FOLR1 Antibody[LK26]

Catalog Number: AN00483M

Note: Centrifuge before opening to ensure complete recovery of vial contents.

Description

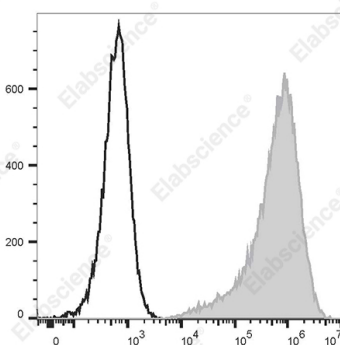
| | |
|--------------------------------|--|
| Reactivity | Human |
| Host | Mouse |
| Isotype | Mouse IgG2a, κ |
| Clone No. | LK26 |
| Isotype Control | Elab Fluor® 647 Mouse IgG2a, κ Isotype Control[C1.18.4] [Product E-AB-F09802M] |
| Conjugation | Elab Fluor® 647 |
| Conjugation Information | Elab Fluor® 647 is designed to be excited by the Red laser (627-640 nm) and detected using an optical filter centered near 670 nm (e.g., a 660/20 nm bandpass filter). |
| Storage Buffer | Phosphate buffered solution, pH 7.2, containing 0.09% stabilizer. |

Applications

Recommended usage

| | |
|------------|---|
| FCM | Each lot of this antibody is quality control tested by flow cytometric analysis. The amount of the reagent is suggested to be used 5 μL of antibody per test (million cells in 100 μL staining volume or per 100 μL of whole blood). Please check your vial before the experiment. Since applications vary, the appropriate dilutions must be determined for individual use. |
|------------|---|

Data



Staining of the HeLa cell line with Elab Fluor® 647 Anti-Human FOLR1 Antibody[LK26] (filled gray histogram) or

Elab Fluor® 647 Mouse IgG2a, κ Isotype Control (empty black histogram). Total viable cells were used for analysis.

Preparation & Storage

| | |
|-----------------|---|
| Storage | Keep as concentrated solution. This product can be stored at 2-8°C for 24 months. Please protected from prolonged exposure to light and do not freeze. |
| Shipping | Ice bag |

Antigen Information

| | |
|------------------------|--|
| Alternate Names | Folate receptor alpha;FR-alpha;KB cells FBP;folate binding protein;folate receptor;adult;adult folate-binding protein;ovarian tumor-associated antigen MOV18;AN00483 |
| Uniprot ID | P15328 |
| Gene ID | 2348 |

For Research Use Only

Background

Folate receptor (FOLR1), also known as folate receptor alpha, is a folate-binding protein (FBP) expressed in adults. It has high affinity for folic acid and its metabolites, including 5-methyltetrahydrofolate (5-MTF), the biologically active form of folic acid used for DNA synthesis and the cysteine cycle. FOLR1 mediates intracellular delivery of 5-MTF. FOLR1 is overexpressed in a variety of tumors, including breast, colorectal, and brain.