

GFP-Tag Monoclonal Antibody

catalog number: **E-AB-48011**

Note: Centrifuge before opening to ensure complete recovery of vial contents.

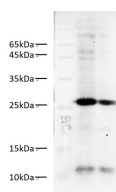
Description

| | |
|---------------------|--------------------------------------------------------------------------|
| Reactivity | All |
| Immunogen | Recombinant GFP protein expressed by E. Coli |
| Host | Mouse |
| Isotype | IgG2a |
| Clone | 5A2 |
| Purification | Protein A/G Purification |
| Buffer | PBS with 0.05% Proclin300, 1% protective protein and 50% glycerol, pH7.4 |

Applications

| Applications | Recommended Dilution |
|--------------|----------------------|
| WB | 1:1000-2000 |
| IF | 1:500-2000 |

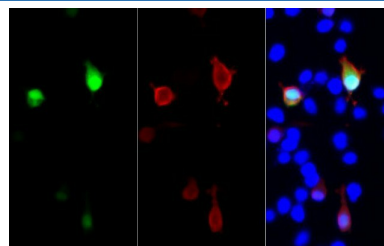
Data



Western blot of GFP transfected Zebrafish with anti-GFP-tag at dilution of 1:1000.

Observed-MW:27 kDa

Calculated-MW:27 kDa



Immunofluorescent analysis of GFP transfected 293 cells with GFP-Tag monoclonal antibody at dilution of 1:500.

Preparation & Storage

| | |
|-----------------|----------------------------------------------------------------------------------------------------------|
| Storage | Store at -20°C Valid for 12 months. Avoid freeze / thaw cycles. |
| Shipping | The product is shipped with ice pack, upon receipt, store it immediately at the temperature recommended. |

Background

The green fluorescent protein (GFP) is a protein that exhibits bright green fluorescence when exposed to light in the blue to ultraviolet range. It is first isolated from the jellyfish *Aequorea victoria* and is frequently used as a reporter of expression. GFP is widely used in gene expression, tracing and protein subcellular localization.

For Research Use Only