

Recombinant Human CD10/Nepriylsin Protein (His Tag)

Catalog Number: PKSH031422

Note: *Centrifuge before opening to ensure complete recovery of vial contents.*

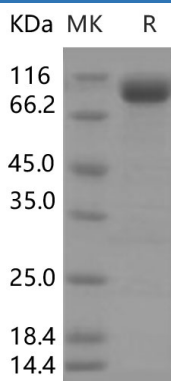
Description

Species	Human
Source	HEK293 Cells-derived Human CD10/Nepriylsin protein Tyr 52-Trp 750, with an N-terminal His
Calculated MW	82.2 kDa
Observed MW	95-105 kDa
Accession	NP_000893.2
Bio-activity	Measured by its ability to cleave the fluorogenic peptide substrate, Mca-RPPGFSAFK (Dnp)-OH, The specific activity is > 1,500 pmoles/min/μg.

Properties

Purity	> 95 % as determined by reducing SDS-PAGE.
Endotoxin	< 1.0 EU per μg of the protein as determined by the LAL method.
Storage	Generally, lyophilized proteins are stable for up to 12 months when stored at -20 to -80°C. Reconstituted protein solution can be stored at 4-8°C for 2-7 days. Aliquots of reconstituted samples are stable at < -20°C for 3 months.
Shipping	This product is provided as lyophilized powder which is shipped with ice packs.
Formulation	Lyophilized from sterile 20mM MES, 100mM NaCl, 1mM ZnCl ₂ , 10% Glycerol, pH6.5. Normally 5% - 8% trehalose, mannitol and 0.01% Tween 80 are added as protectants before lyophilization. Please refer to the specific buffer information in the printed manual.
Reconstitution	Please refer to the printed manual for detailed information.

Data



> 95 % as determined by reducing SDS-PAGE.

Background

For Research Use Only

Toll-free: 1-888-852-8623
Web: www.elabscience.com

Tel: 1-832-243-6086
Email: techsupport@elabscience.com

Fax: 1-832-243-6017

The cluster of differentiation (CD) system is commonly used as cell markers in immunophenotyping. Different kinds of cells in the immune system can be identified through the surface CD molecules which associating with the immune function of the cell. There are more than 320 CD unique clusters and subclusters have been identified. Some of the CD molecules serve as receptors or ligands important to the cell through initiating a signal cascade which then alter the behavior of the cell. Some CD proteins do not take part in cell signal process but have other functions such as cell adhesion. Cluster of differentiation 10 (CD10), also known as Neprilysin and neutral endopeptidase, is a member of the CD system. CD10 is a zinc-dependent metalloprotease enzyme that had function to degrade a number of small secreted peptides such as the amyloid beta peptide. It exist as a membrane-bound protein and have high concentration in kidney and lung tissues. Mutations in the CD10 gene can induce the familial forms of Alzheimer's disease, providing strong evidence for the protein's association with the Alzheimer's disease process. CD10 is also associated with other biochemical processes.

For Research Use Only

Toll-free: 1-888-852-8623
Web: www.elabscience.com

Tel: 1-832-243-6086
Email: techsupport@elabscience.com

Fax: 1-832-243-6017